

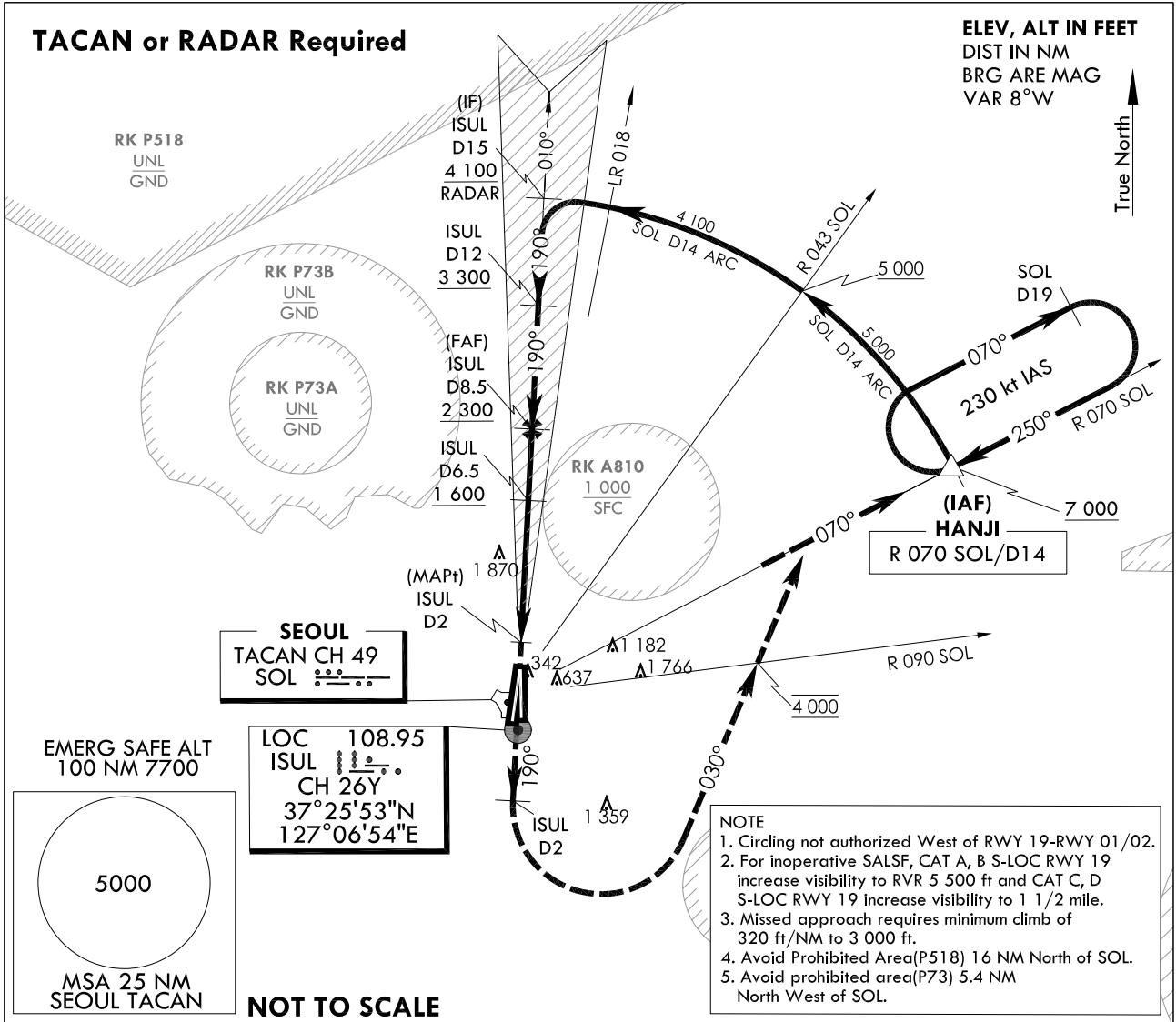
**INSTRUMENT  
APPROACH  
CHART**

**AERODROME ELEV 93 ft**  
HEIGHTS RELATED TO  
THR RWY 19 - ELEV 68 ft

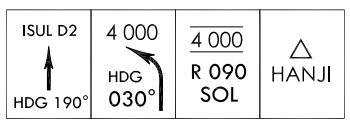
SEOUL APP 123.8 363.8  
SEOUL TWR 126.2  
234.5 236.6

**SEOUL/Seoul(RKSM)**  
LOC/DME Y  
RWY 19

Note : Approach and Circle to land under U.S. TERPS.

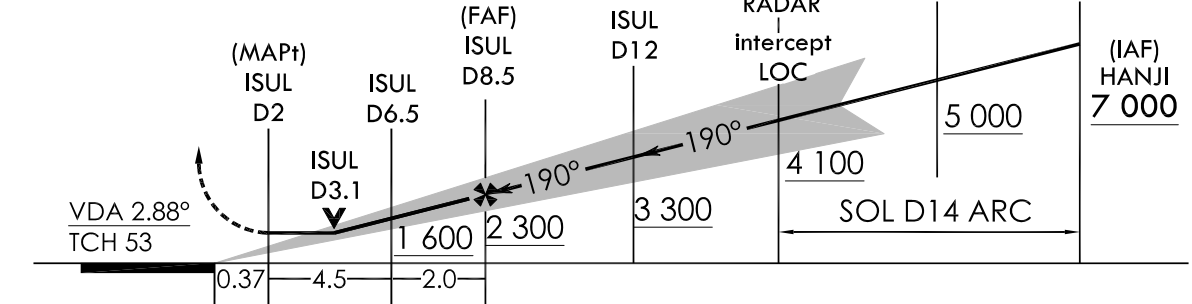


TRANSITION ALT 14 000  
TRANSITION LVL FL 140



Missed Approach Climb Rate table

KNOTS	60	120	180	240	300	TO
V/V(fpm)	320	640	960	1 280	1 590	3 000



CATEGORY	A	B	C	D	E
S-LOC RWY 19	600 / 40 528 (600 - 3/4)		600 - 1/4 528 (600 - 1/4)		N/A
Circling	1 020 - 1 1/4 927(1 000-1/4)		1 560 - 3 1 467(1 500-3)	2 260 - 3 2 167(2 200-3)	N/A

**MISSED APPROACH**  
Climb HDG 190° to ISUL 2DME and climbing left turn HDG 030° to cross R 090 SOL at 4 000 ft, then R 070 SOL to HANJI and hold, continue climb-in-holding to 7 000 ft.

Change : Amended coordinate and radial format.

**INTENTIONALLY**

**LEFT**

**BLANK**

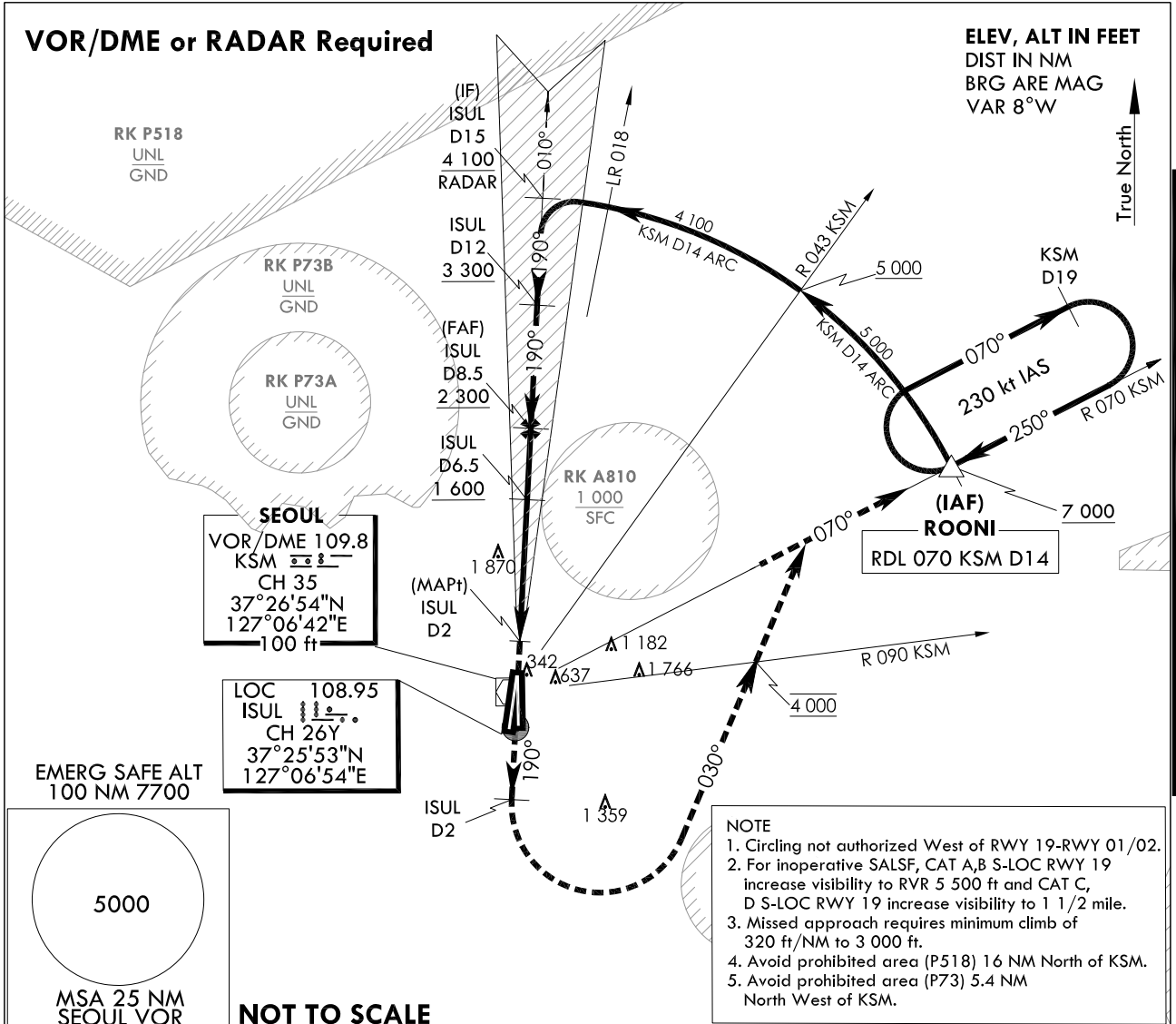
**INSTRUMENT  
APPROACH  
CHART**

**AERODROME ELEV 93 ft**  
HEIGHTS RELATED TO  
THR RWY 19 - ELEV **68 ft**

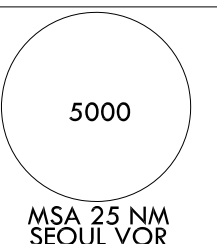
SEOUL APP 123.8 363.8  
SEOUL TWR 126.2  
234.5 236.6

**SEOUL/Seoul(RKSM)**  
**LOC/DME Y**  
**RWY 19**

Note : Approach and Circle to land under U.S. TERPS.



EMERG SAFE ALT  
100 NM 7700



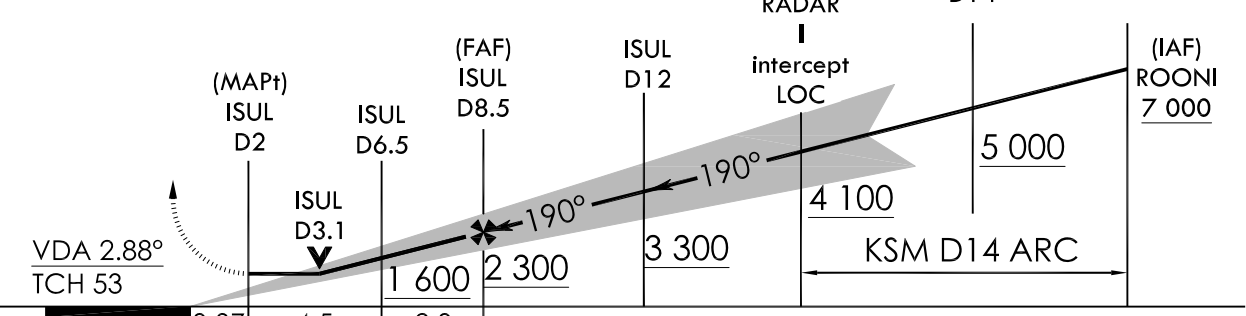
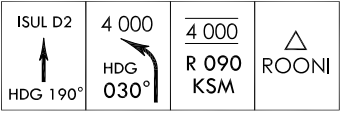
**NOT TO SCALE**

- NOTE**
1. Circling not authorized West of RWY 19-RWY 01/02.
  2. For inoperative SALSF, CAT A,B S-LOC RWY 19 increase visibility to RVR 5 500 ft and CAT C, D S-LOC RWY 19 increase visibility to 1 1/2 mile.
  3. Missed approach requires minimum climb of 320 ft/NM to 3 000 ft.
  4. Avoid prohibited area (P518) 16 NM North of KSM.
  5. Avoid prohibited area (P73) 5.4 NM North West of KSM.

TRANSITION ALT 14 000  
TRANSITION LVL FL 140

Missed Approach Climb Rate table

KNOTS	60	120	180	240	300	TO
V/V(fpm)	320	640	960	1 280	1 590	3 000



CATEGORY	A	B	C	D	E
S-LOC RWY 19	600 / 40 528 (600 - 3/4)		600 - 1/4	528 (600 - 1/4)	N/A
Circling	1 020 - 1 1/4 927(1 000-1 1/4)		1 560 - 3 1 467(1 500-3)	2 260 - 3 2 167(2 200-3)	N/A

**MISSED APPROACH**  
Climb HDG 190° to ISUL 2DME and climbing left turn HDG 030° to cross R 090 KSM at 4 000 ft, then R 070 KSM to ROONI and hold, continue climb-in-holding to 7 000 ft.

Change : Amended coordinate and radial format.

**INTENTIONALLY**

**LEFT**

**BLANK**

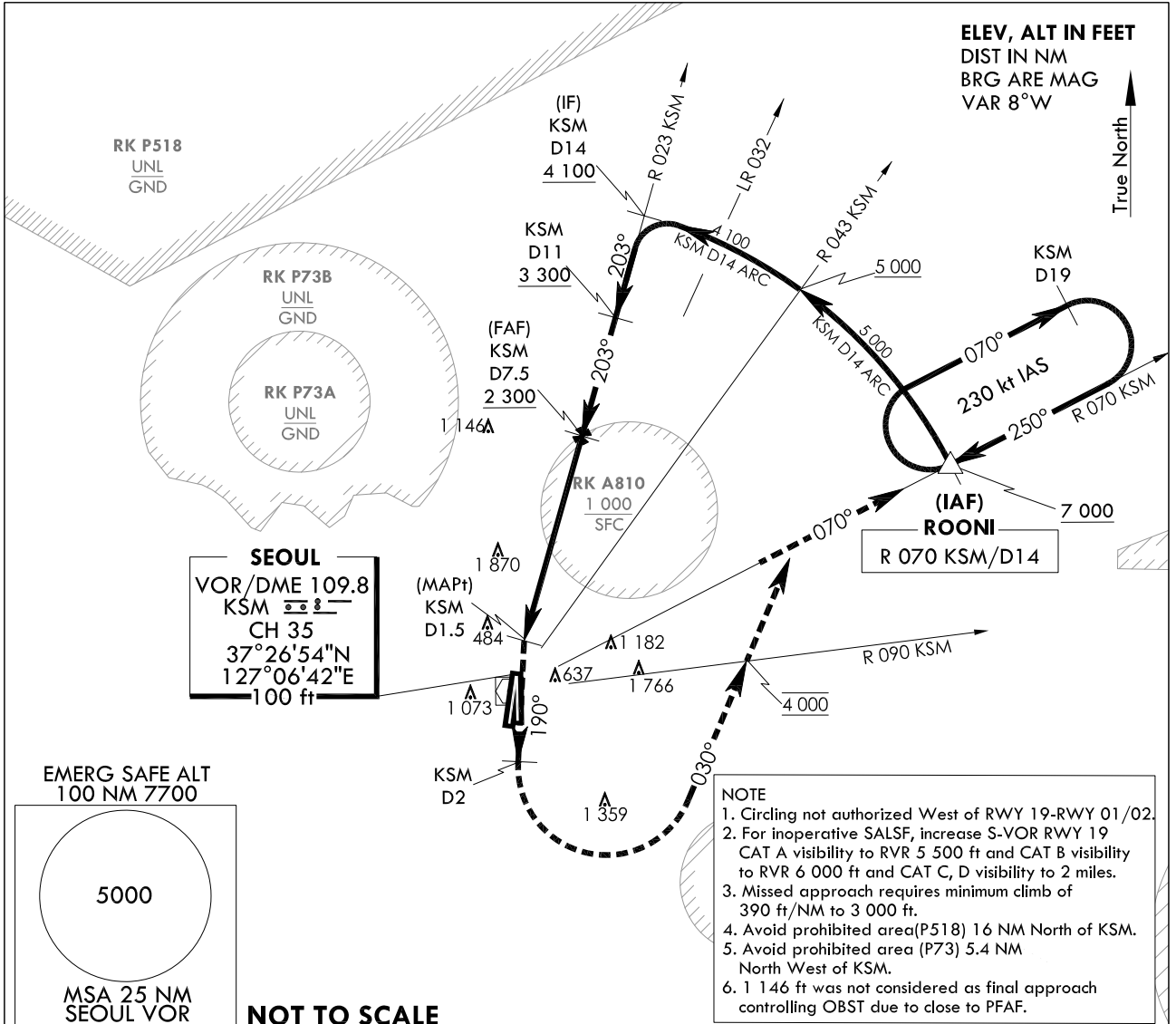
**INSTRUMENT  
APPROACH  
CHART**

**AERODROME ELEV 93 ft**  
HEIGHTS RELATED TO  
THR RWY 19 - ELEV 68 ft

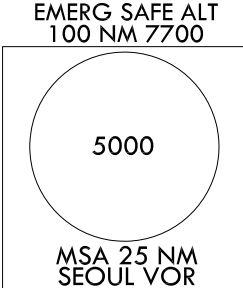
SEOUL APP 123.8 363.8  
SEOUL TWR 126.2  
234.5 236.6

**SEOUL/Seoul(RKSM)**  
**VOR/DME**  
**RWY 19**

Note : Approach and Circle to land under U.S. TERPS.



**SEOUL**  
VOR/DME 109.8  
KSM 2  
CH 35  
37°26'54"N  
127°06'42"E  
100 ft



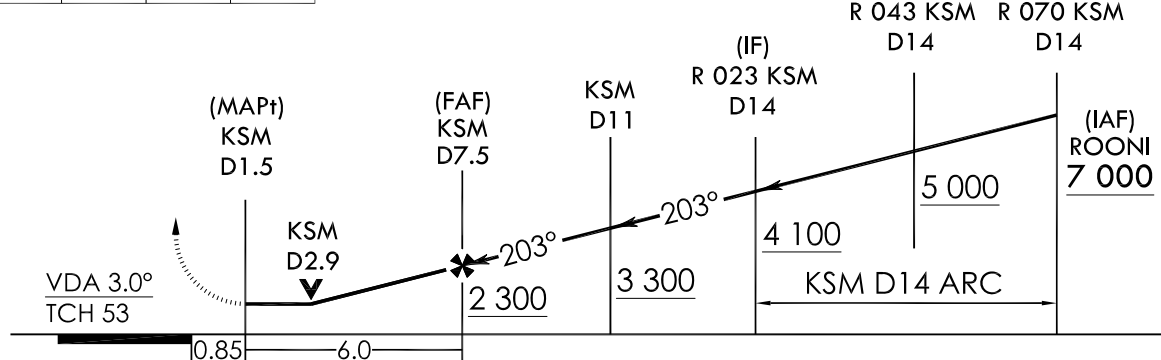
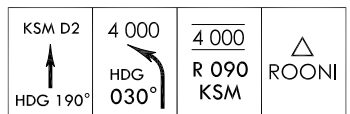
**NOT TO SCALE**

- NOTE**
1. Circling not authorized West of RWY 19-RWY 01/02.
  2. For inoperative SALSF, increase S-VOR RWY 19 CAT A visibility to RVR 5 500 ft and CAT B visibility to RVR 6 000 ft and CAT C, D visibility to 2 miles.
  3. Missed approach requires minimum climb of 390 ft/NM to 3 000 ft.
  4. Avoid prohibited area(P518) 16 NM North of KSM.
  5. Avoid prohibited area (P73) 5.4 NM North West of KSM.
  6. 1 146 ft was not considered as final approach controlling OBST due to close to PFAF.

TRANSITION ALT 14 000  
TRANSITION LVL FL 140

Missed Approach Climb Rate table

KNOTS	60	120	180	240	300	TO
V/V(fpm)	390	770	1 150	1 530	1 910	3 000



CATEGORY	A	B	C	D	E
S-VOR RWY 19	820 / 40 748 (800 - 3/4)	820 / 55 748 (800 - 1)	820 - 1 7/8 748 (800 - 1 7/8)		N/A
Circling	1 020 - 1 1/4 927(1 000-1 1/4)		1 560 - 3 1 467(1 500-3)	2 260 - 3 2 167(2 200-3)	N/A

**MISSED APPROACH**  
Climb HDG 190° to KSM 2DME and climbing left turn HDG 030° to cross R 090 KSM at 4 000 ft, then R 070 KSM to ROONI and hold, continue climb-in-holding to 7 000 ft.

Change : Amended coordinate and radial format.

**INTENTIONALLY**

**LEFT**

**BLANK**

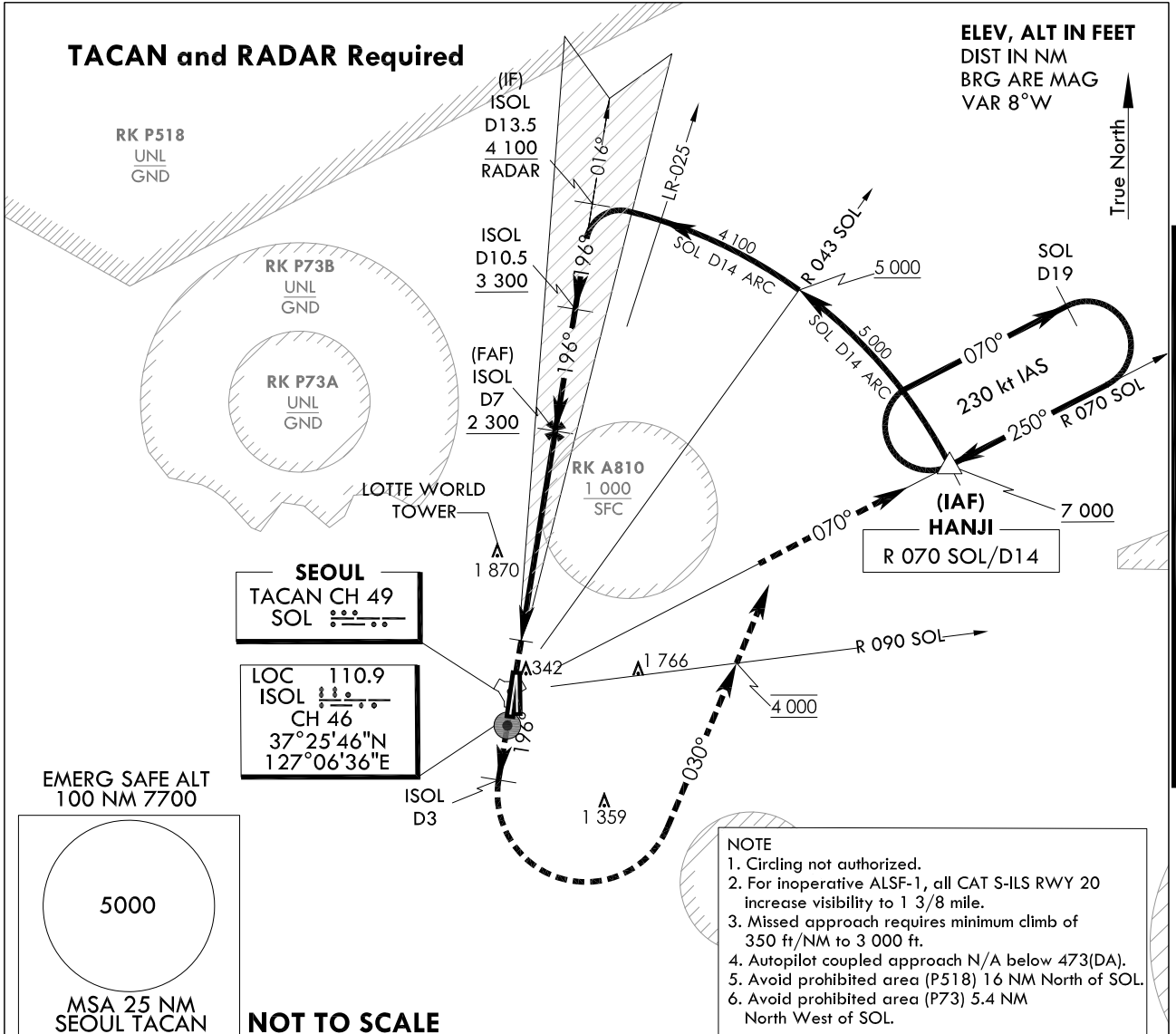
**INSTRUMENT  
APPROACH  
CHART**

**AERODROME ELEV 93 ft**  
HEIGHTS RELATED TO  
THR RWY 20 - ELEV 68 ft  
HIGHEST ELEV TDZ 69 ft

SEOUL APP 123.8 363.8  
SEOUL TWR 126.2  
234.5 236.6

**SEOUL/Seoul(RKSM)**  
ILS Z  
RWY 20

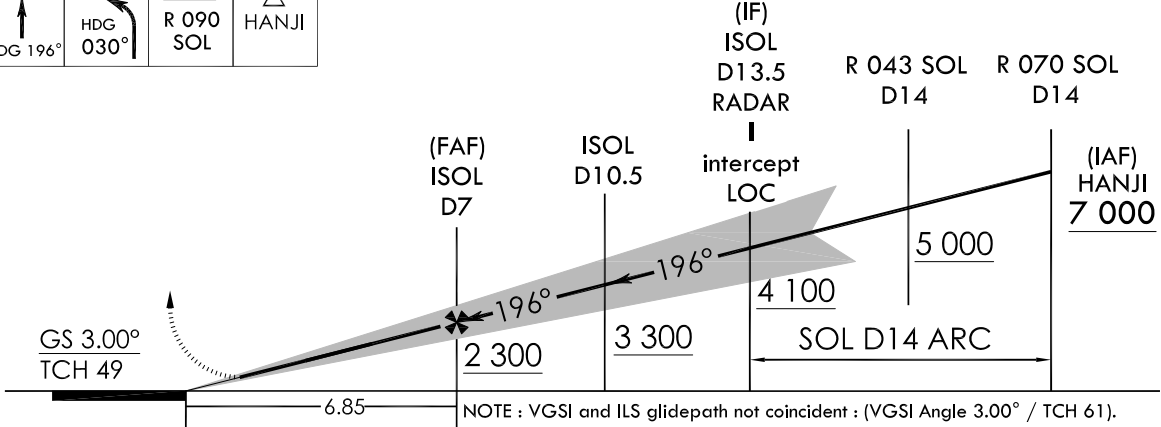
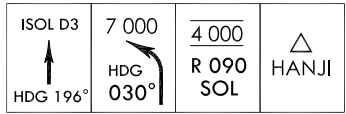
Note : Approach and Circle to land under U.S. TERPS.



TRANSITION ALT 14 000  
TRANSITION LVL FL 140

Missed Approach Climb Rate table

KNOTS	60	120	180	240	300	TO
V/V(fpm)	350	700	1 050	1 400	1 750	3 000



- NOTE**
1. Circling not authorized.
  2. For inoperative ALSF-1, all CAT S-ILS RWY 20 increase visibility to 1 3/8 mile.
  3. Missed approach requires minimum climb of 350 ft/NM to 3 000 ft.
  4. Autopilot coupled approach N/A below 473(DA).
  5. Avoid prohibited area (P518) 1.6 NM North of SOL.
  6. Avoid prohibited area (P73) 5.4 NM North West of SOL.

CATEGORY	A	B	C	D	E
S-ILS RWY 20		473 / 45	404 (400 - 7/8)		N/A

**MISSED APPROACH**  
Climb HDG 196° to ISOL 3DME and climbing left turn HDG 030° to cross R 090 SOL at 4 000 ft, then R 070 SOL to HANJI and hold, continue climb-in-holding to 7 000 ft.

Change : Amended coordinate and radial format.

**INTENTIONALLY**

**LEFT**

**BLANK**



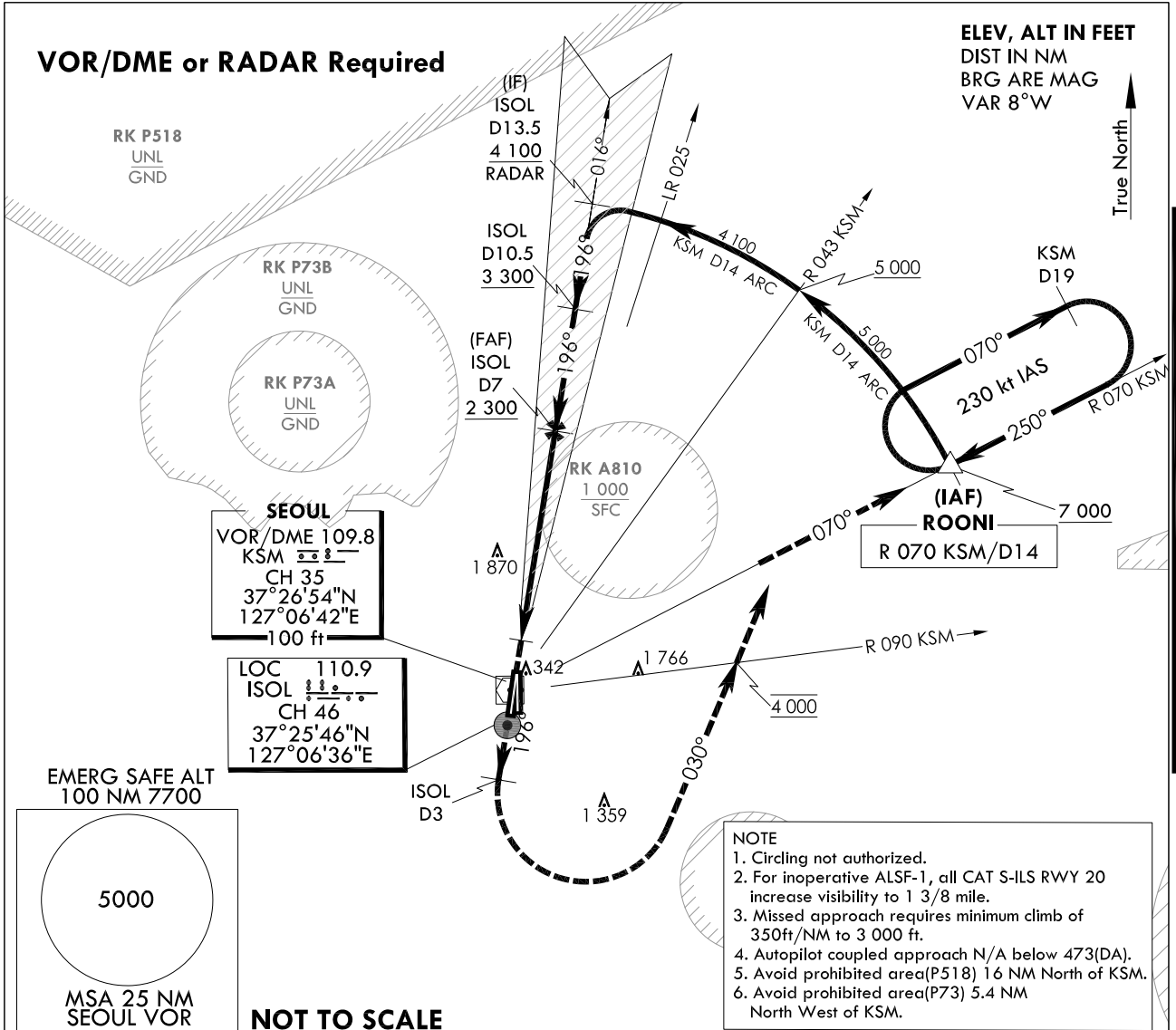
**INSTRUMENT  
APPROACH  
CHART**

**AERODROME ELEV 93 ft**  
HEIGHTS RELATED TO  
THR RWY 20 - ELEV 68 ft  
HIGHEST ELEV TDZ 69 ft

SEOUL APP 123.8 363.8  
SEOUL TWR 126.2  
234.5 236.6

**SEOUL/Seoul(RKSM)**  
ILS Y  
RWY 20

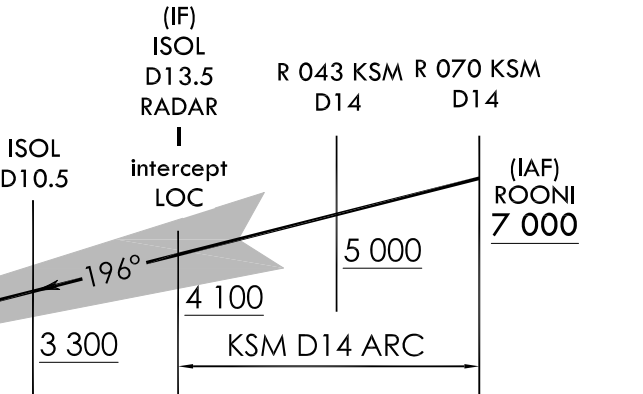
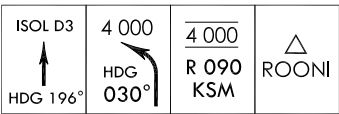
Note : Approach and Circle to land under U.S. TERPS.



TRANSITION ALT 14 000  
TRANSITION LVL FL 140

Missed Approach Climb Rate table

KNOTS	60	120	180	240	300	TO
V/V(fpm)	350	700	1 050	1 400	1 750	3 000



NOTE : VGSI and ILS glidepath not coincident : (VGSI Angle 3.00° / TCH 61).

CATEGORY	A	B	C	D	E
S-ILS RWY 20		473 / 45	404 (400 - 7/8)		N/A

**MISSED APPROACH**  
Climb HDG 196° to ISOL 3DME and climbing left turn HDG 030° to cross R 090 KSM at 4 000 ft, then R 070 KSM to ROONI and hold, continue climb-in-holding to 7 000 ft.

Change : Amended coordinate and radial format.

**INTENTIONALLY**

**LEFT**

**BLANK**

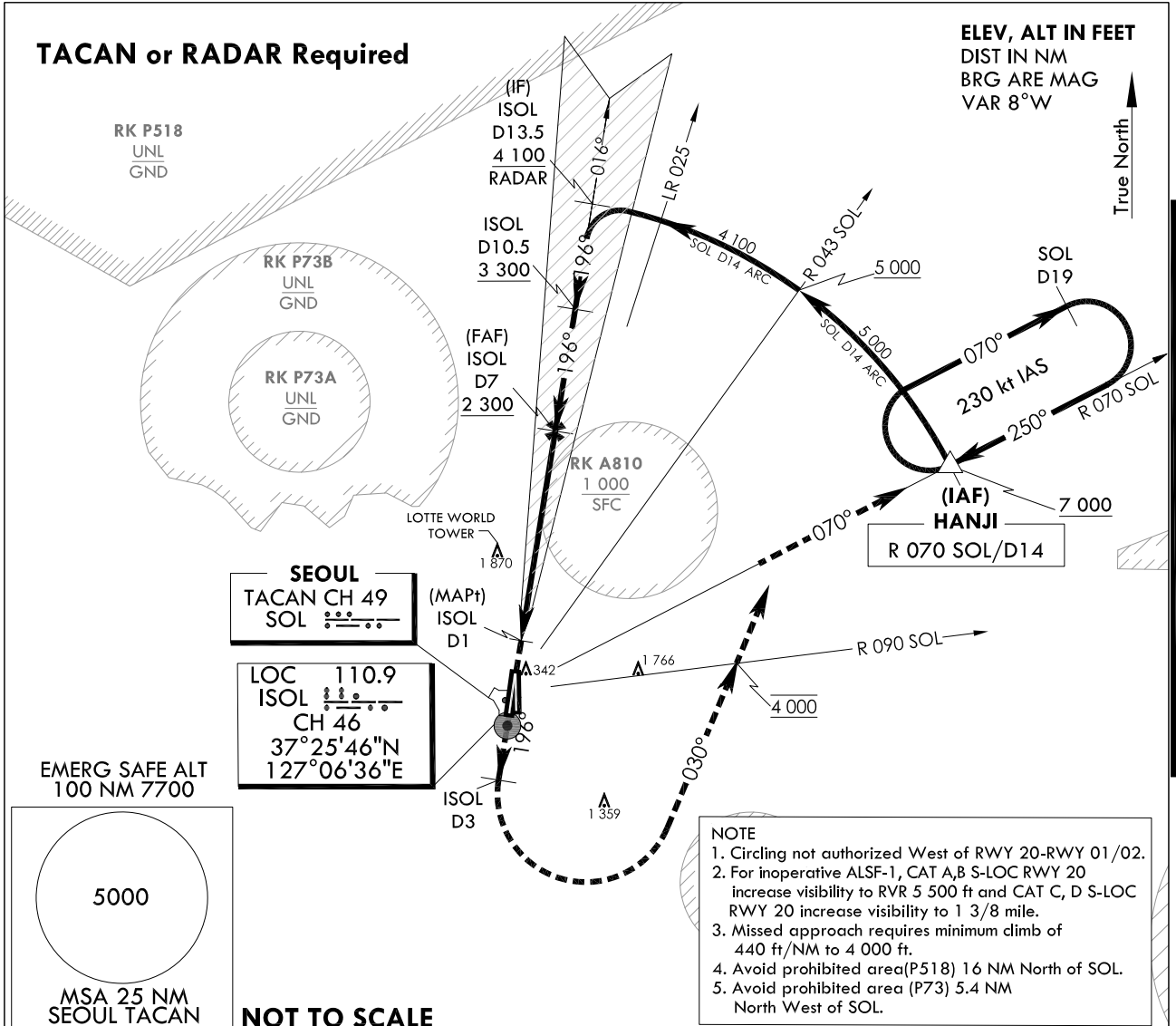
**INSTRUMENT  
APPROACH  
CHART**

**AERODROME ELEV 93 ft**  
HEIGHTS RELATED TO  
THR RWY 20 - ELEV 68 ft  
HIGHEST ELEV TDZ 69 ft

SEOUL APP 123.8 363.8  
SEOUL TWR 126.2  
234.5 236.6

**SEOUL/Seoul(RKSM)**  
**LOC/DME Z**  
**RWY 20**

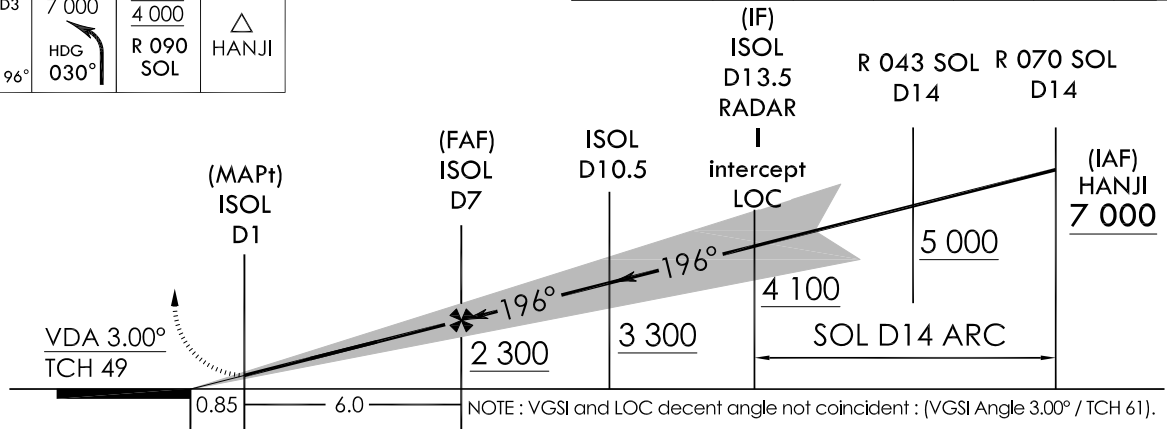
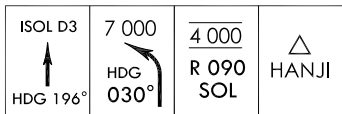
Note : Approach and Circle to land under U.S. TERPS.



TRANSITION ALT 14 000  
TRANSITION LVL FL 140

**Missed Approach Climb Rate table**

KNOTS	60	120	180	240	300	TO
V/V(fpm)	440	880	1 320	1 760	2 200	4 000



CATEGORY	A	B	C	D	E
S-LOC RWY 20	520 / 35 451 (500 - 5/8)		520 - 45 451 (500 - 5/8)		N/A
Circling	1 020 - 1 1/4 927(1 000-1 1/4)		1 560 - 3 1 467(1 500-3)	2 260 - 3 2 167(2 200-3)	N/A

**MISSED APPROACH**

Climb HDG 196° to ISOL 3DME and climbing left turn HDG 030° to cross R 090 SOL at 4 000 ft, then R 070 SOL to HANJI and hold, continue climb-in-holding to 7 000 ft.

Change : Amended coordinate and radial format.

**INTENTIONALLY**

**LEFT**

**BLANK**

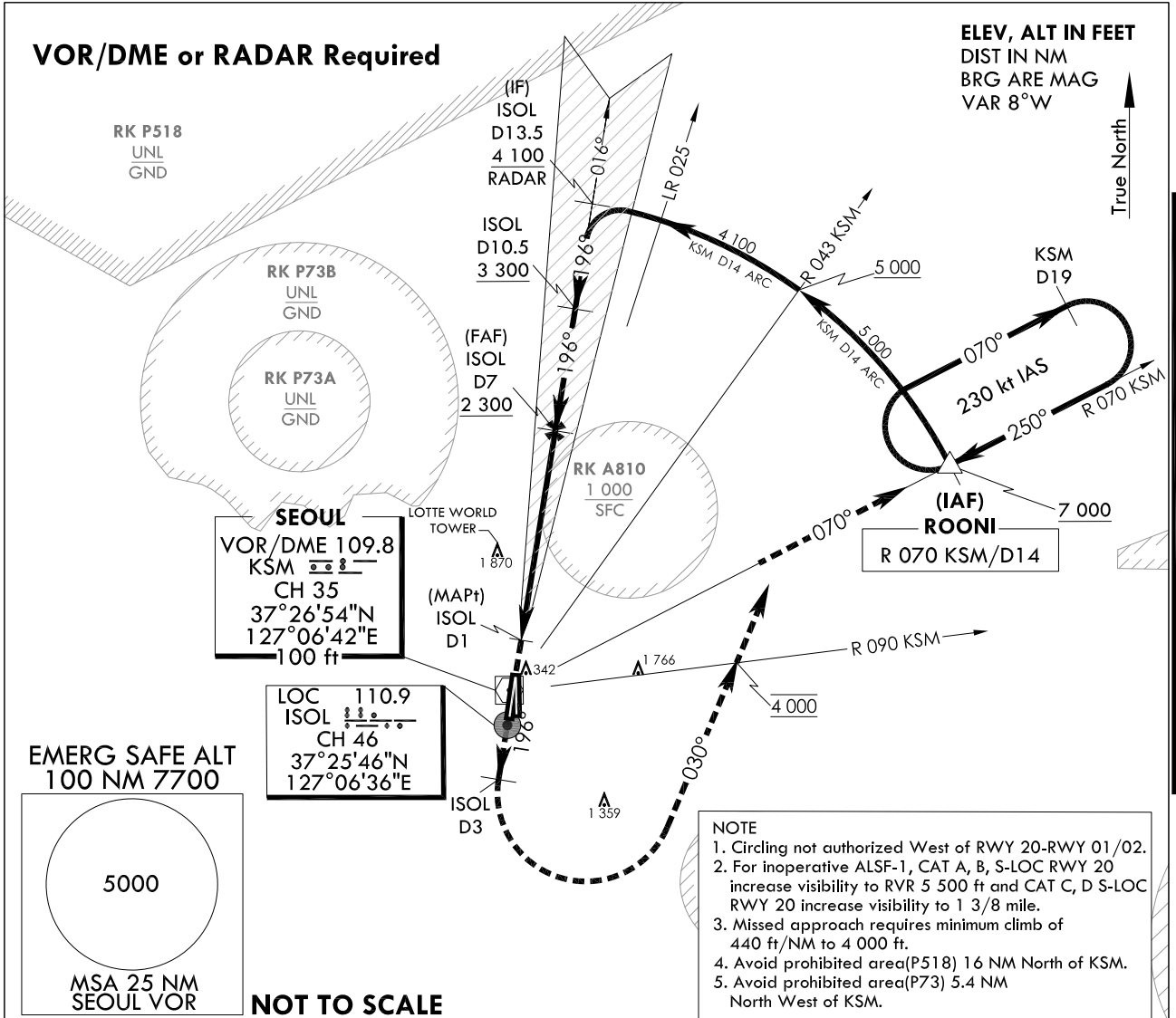
**INSTRUMENT  
APPROACH  
CHART**

**AERODROME ELEV 93 ft**  
HEIGHTS RELATED TO  
THR RWY 20 - ELEV 68 ft  
HIGHEST ELEV TDZ 69 ft

SEOUL APP 123.8 363.8  
SEOUL TWR 126.2  
234.5 236.6

**SEOUL/Seoul(RKSM)**  
**LOC/DME Y**  
**RWY 20**

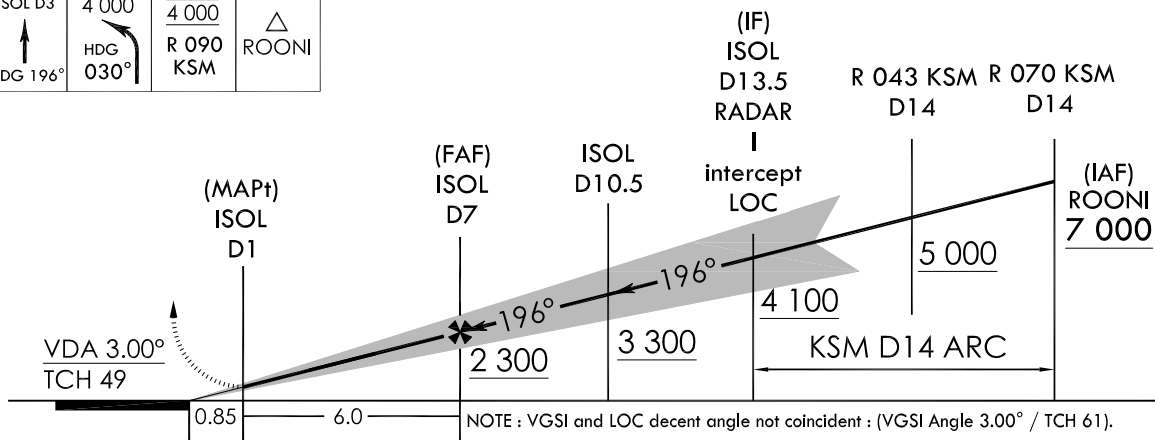
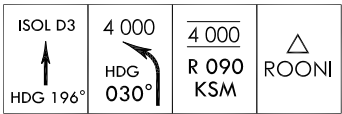
Note : Approach and Circle to land under U.S. TERPS.



TRANSITION ALT 14 000  
TRANSITION LVL FL 140

**Missed Approach Climb Rate table**

KNOTS	60	120	180	240	300	TO
V/V(fpm)	440	880	1 320	1 760	2 200	4 000



CATEGORY	A	B	C	D	E
S-LOC RWY 20	520 / 35 451 (500 - $\frac{7}{8}$ )		520 - 45 451 (500 - $\frac{7}{8}$ )		N/A
Circling	1 020 - 1 $\frac{1}{4}$ 927(1 000-1 $\frac{1}{4}$ )		1 560 - 3 1 467(1 500-3)	2 260 - 3 2 167(2 200-3)	N/A

**MISSED APPROACH**

Climb HDG 196° to ISOL 3DME and climbing left turn HDG 030° to cross R 090 KSM at 4 000 ft, then R 070 KSM to ROONI and hold, continue climb-in-holding to 7 000 ft.

Change : Amended coordinate and radial format.

**INTENTIONALLY**

**LEFT**

**BLANK**

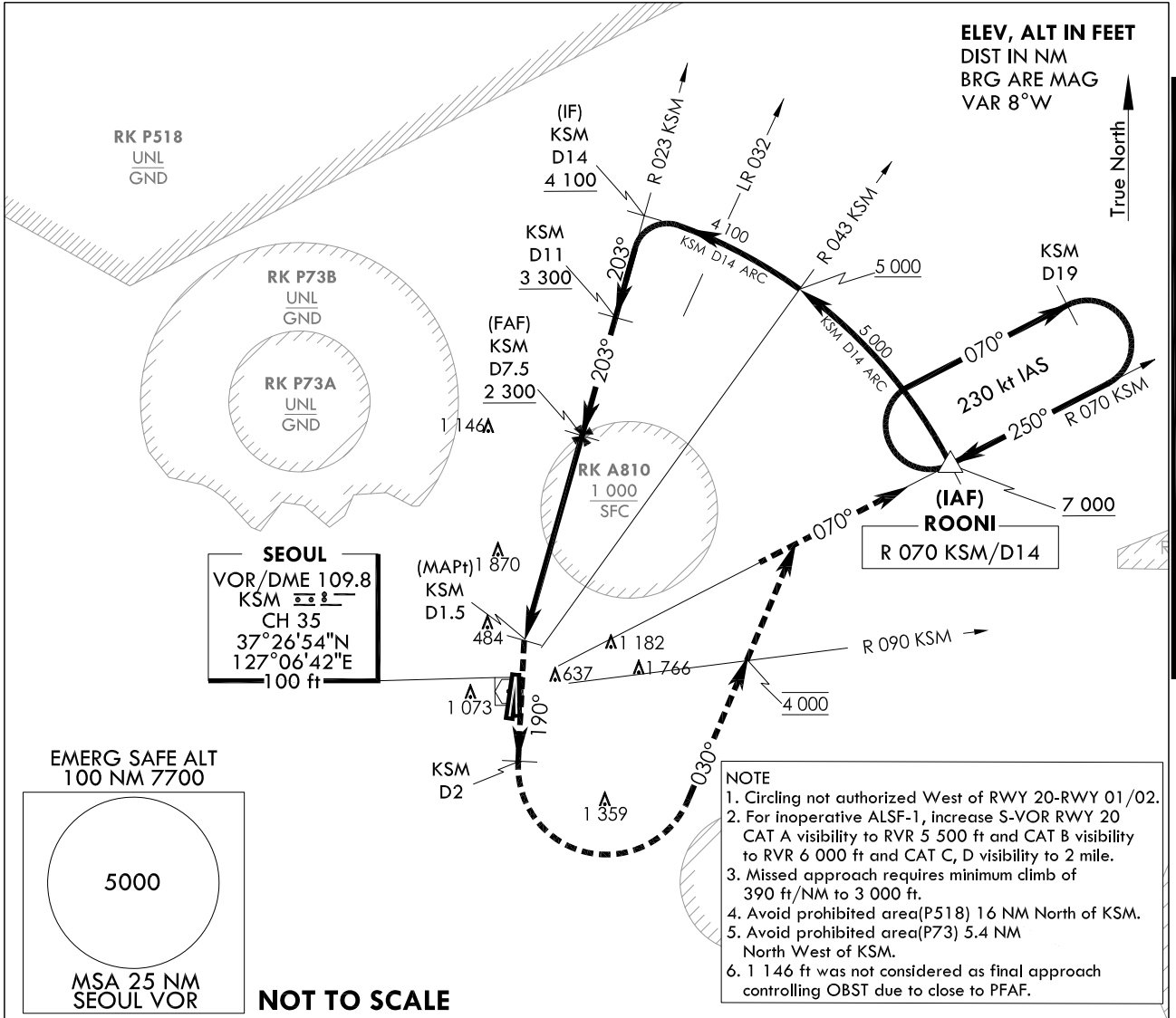
**INSTRUMENT  
APPROACH  
CHART**

**AERODROME ELEV 93 ft**  
HEIGHTS RELATED TO  
THR RWY 20 - ELEV 68 ft  
HIGHEST ELEV TDZ 69 ft

SEOUL APP 123.8 363.8  
SEOUL TWR 126.2  
234.5 236.6

**SEOUL/Seoul(RKSM)**  
**VOR/DME**  
**RWY 20**

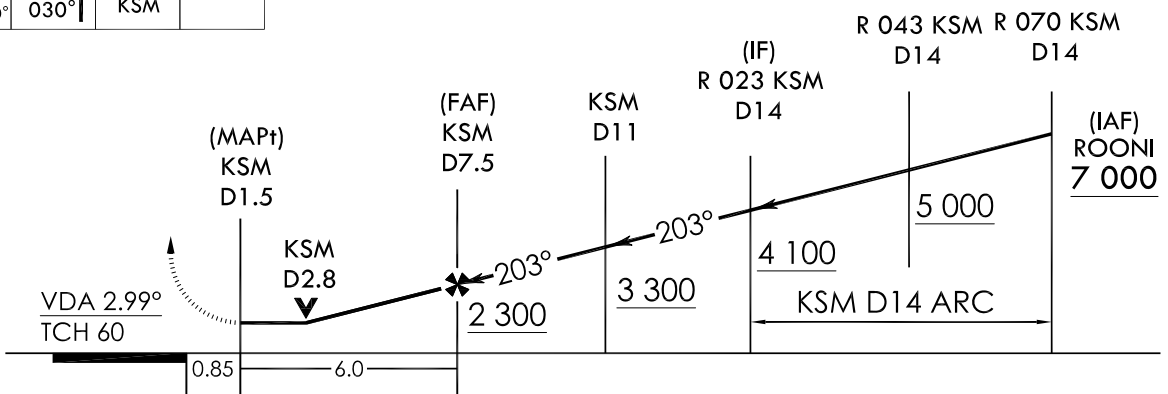
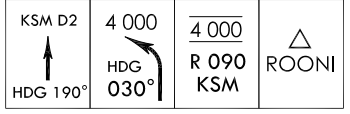
Note : Approach and Circle to land under U.S. TERPS.



TRANSITION ALT 14 000  
TRANSITION LVL FL 140

**Missed Approach Climb Rate table**

KNOTS	60	120	180	240	300	TO
V/V(ftpm)	390	770	1 150	1 530	1 910	3 000



CATEGORY	A	B	C	D	E
S-VOR RWY 20	820 / 35 751 (800 - 3/4)	820 / 40 751 (800 - 3/4)	820 - 1 3/4 751 (800 - 1 3/4)		N/A
Circling	1 020 - 1 1/4 927(1 000-1 1/4)		1 560 - 3 1 467(1 500-3)	2 260 - 3 2 167(2 200-3)	N/A

**MISSED APPROACH**  
Climb HDG 190° to KSM 2DME and climbing left turn HDG 030° to cross R 090 KSM at 4 000 ft, then R 070 KSM to ROONI and hold, continue climb-in-holding to 7 000 ft.

Change : Amended coordinate and radial format.

**INTENTIONALLY**

**LEFT**

**BLANK**



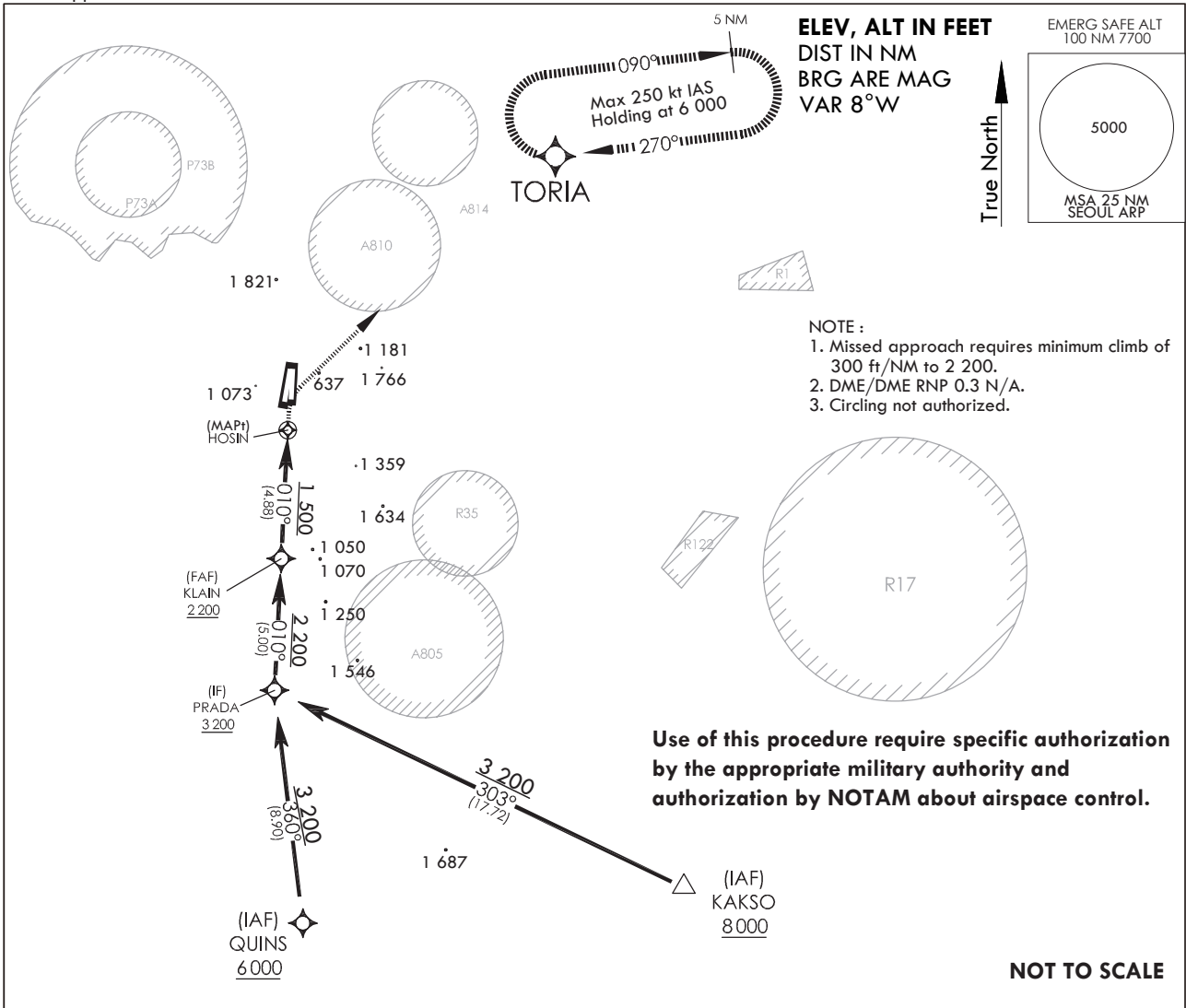
**INSTRUMENT  
APPROACH  
CHART**

AERODROME ELEV **94** ft  
HEIGHTS RELATED TO  
THR RWY 01 - ELEV **78** ft

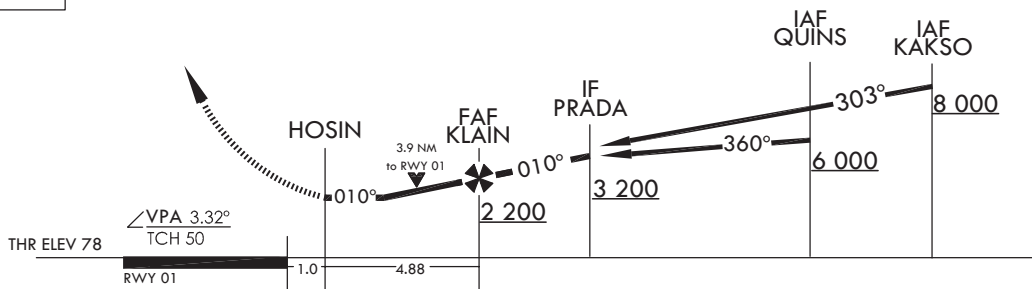
SEOUL APP 123.8 363.8  
SEOUL TWR 126.2  
236.6 234.5

**SEOUL/Seoul (RKSM)  
RNAV(GNSS) RWY 01**

Note : Approach and Circle to land under U.S TERPS.



**MISSED APPROACH**  
Climbing right turn 6 000 direct TORIA and hold.



CATEGORY	A	B	C	D	E
LNAV/ VNAV DA	N/A				
LNAV	1 500-1¼ 1 422(1 500-1¼)	1 500-1½ 1 422(1 500-1½)	1 500-3 1 422(1 500-3)	N/A	
CIRCLING	N/A				

SEOUL/Seoul (RKSM)  
RNAV(GNSS) RWY 01

AERONAUTICAL DATA TABULATION

Instrument Approach Procedure Coding Tables

RNAV(GNSS) RWY 01 (From QUINS)

Serial Number	Path Descriptor	Waypoint Identifier	Fly -Over	Course/Track ° M(° T)	Distance (NM)	Turn Direction	Altitude (ft)	Speed (kt)	Coordinates	VPA /TCH	Navigation specification	Remarks
001	IF	QUINS	-	-	-	-	+6 000	-	37°06'20.2845"N 127°08'01.9225"E	-	RNPAPCH	IAF
002	TF	PRADA	-	359.9°/351.9°	8.9	-	+3 200	-	37°15'09.3930"N 127°06'28.1856"E	-	RNPAPCH	IF
003	TF	KLAIN	-	9.8°/1.8°	5	-	+2 200	-	37°20'09.6309"N 127°06'39.9962"E	-	RNPAPCH	FAF
004	TF	HOSIN	Y	9.8°/1.8°	4.88	-	+1 500	-	37°25'02.5948"N 127°06'51.5321"E	3.32°/50	RNPAPCH	MAPt
005	DF	TORIA	-	-	-	R	6 000	-	37°38'02.3748"N 127°21'30.6133"E	-	RNPAPCH	-
006	HM	TORIA	-	270.0°/262.0°	5	R	@6 000	-250	37°38'02.3748"N 127°21'30.6133"E	-	RNPAPCH	HOLDING 5NM LEG

RNAV(GNSS) RWY 01 (From KAKSO)

Serial Number	Path Descriptor	Waypoint Identifier	Fly -Over	Course/Track ° M(° T)	Distance (NM)	Turn Direction	Altitude (ft)	Speed (kt)	Coordinates	VPA /TCH	Navigation specification	Remarks
001	IF	KAKSO	-	-	-	-	+8 000	-	37°07'45"N 127°26'37"E	-	RNPAPCH	IAF
002	TF	PRADA	-	302.8°/294.8°	17.72	-	+3 200	-	37°15'09.3930"N 127°06'28.1856"E	-	RNPAPCH	IF
003	TF	KLAIN	-	9.8°/1.8°	5	-	+2 200	-	37°20'09.6309"N 127°06'39.9962"E	-	RNPAPCH	FAF
004	TF	HOSIN	Y	9.8°/1.8°	4.88	-	+1 500	-	37°25'02.5948"N 127°06'51.5321"E	3.32°/50	RNPAPCH	MAPt
005	DF	TORIA	-	-	-	R	6 000	-	37°38'02.3748"N 127°21'30.6133"E	-	RNPAPCH	-
006	HM	TORIA	-	270.0°/262.0°	5	R	@6 000	-250	37°38'02.3748"N 127°21'30.6133"E	-	RNPAPCH	HOLDING 5NM LEG

Change : Amended coordinate format.

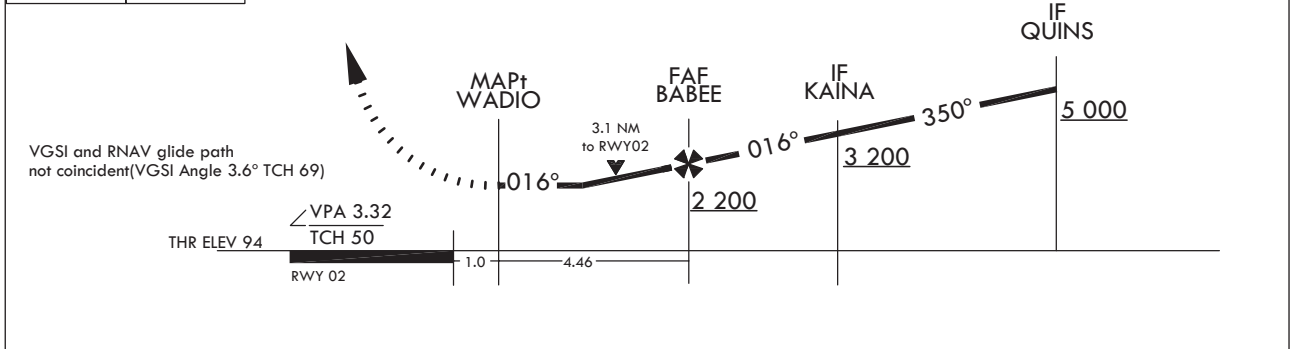
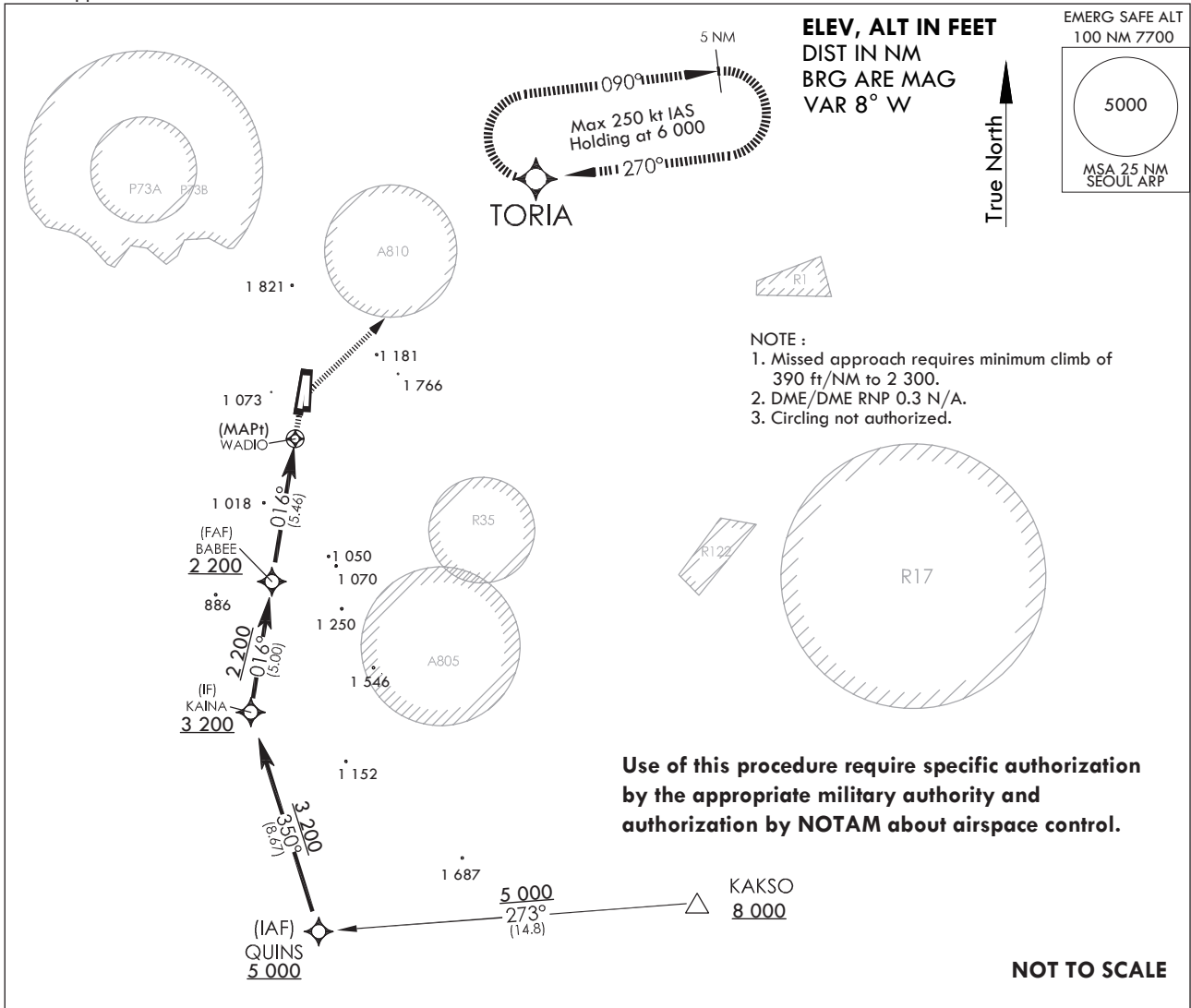
**INSTRUMENT APPROACH CHART**

AERODROME ELEV **94** ft  
 HEIGHTS RELATED TO  
 THR RWY 02 - ELEV **94** ft

SEOUL APP 123.8 363.8  
 SEOUL TWR 126.2  
 236.6 234.5

**SEOUL/Seoul (RKSM)**  
**RNAV(GNSS) RWY 02**

Note : Approach and Circle to land under U.S TERPS.



CATEGORY	A	B	C	D	E
LNAV/VNAV DA	N/A				N/A
LNAV	1 240-1½ 1 146(1 200-1½)	1 240-1½ 1 146(1 200-1½)	1 240-3 1 146(1 200-3)		N/A
CIRCLING	N/A				

SEOUL/Seoul (RKSM)  
RNAV(GNSS) RWY 02

AERONAUTICAL DATA TABULATION

Instrument Approach Procedure Coding Tables

RNAV(GNSS) RWY 02

Serial Number	Path Descriptor	Waypoint Identifier	Fly -Over	Course/Track ° M(° T)	Distance (NM)	Turn Direction	Altitude (ft)	Speed (kt)	Coordinates	VPA /TCH	Navigation specification	Remarks
001	IF	QUINS	-	-	-	-	+5 000	-	37°06'20.2845"N 127°08'01.9225"E	-	RNPAPCH	IAF
002	TF	KAINA	-	349.67°/ 341.67°	8.67	-	+3 200	-	37°14'34.8404"N 127°04'36.9589"E	-	RNPAPCH	IF
003	TF	BABEE	-	16.07°/ 8.07°	5	-	+2 200	-	37°19'32.2479"N 127°05'29.7485"E	-	RNPAPCH	FAF
004	TF	WADIO	Y	16.10°/ 8.10°	5.46	-	+1 240	-	37°24'57.1290"N 127°06'27.5325"E	3.32°/50	RNPAPCH	MAPt
005	DF	TORIA	-	-	-	R	@6 000	-	37°38'02.3748"N 127°21'30.6133"E	-	RNPAPCH	-
006	HM	TORIA	-	270.0°/262.0°	5	R	@6 000	-250	37°38'02.3748"N 127°21'30.6133"E	-	RNPAPCH	HOLDING 5NM LEG

Feeder Routes

Serial Number	Path Descriptor	Waypoint Identifier	Fly -Over	Course/Track ° M(° T)	Distance (NM)	Turn Direction	Altitude (ft)	Speed (kt)	Coordinates	VPA /TCH	Navigation specification	Remarks
001	TF	KAKSO	-	-	-	-	+8 000	-	37°07'45"N 127°26'37"E	-	RNAV1	EN ROUTE
002	TF	QUINS	-	272.67°/ 264.67°	14.93	-	+5 000	-	37°06'20.2845"N 127°08'01.9225"E	-	RNPAPCH	IAF

Change : Amended coordinate format.

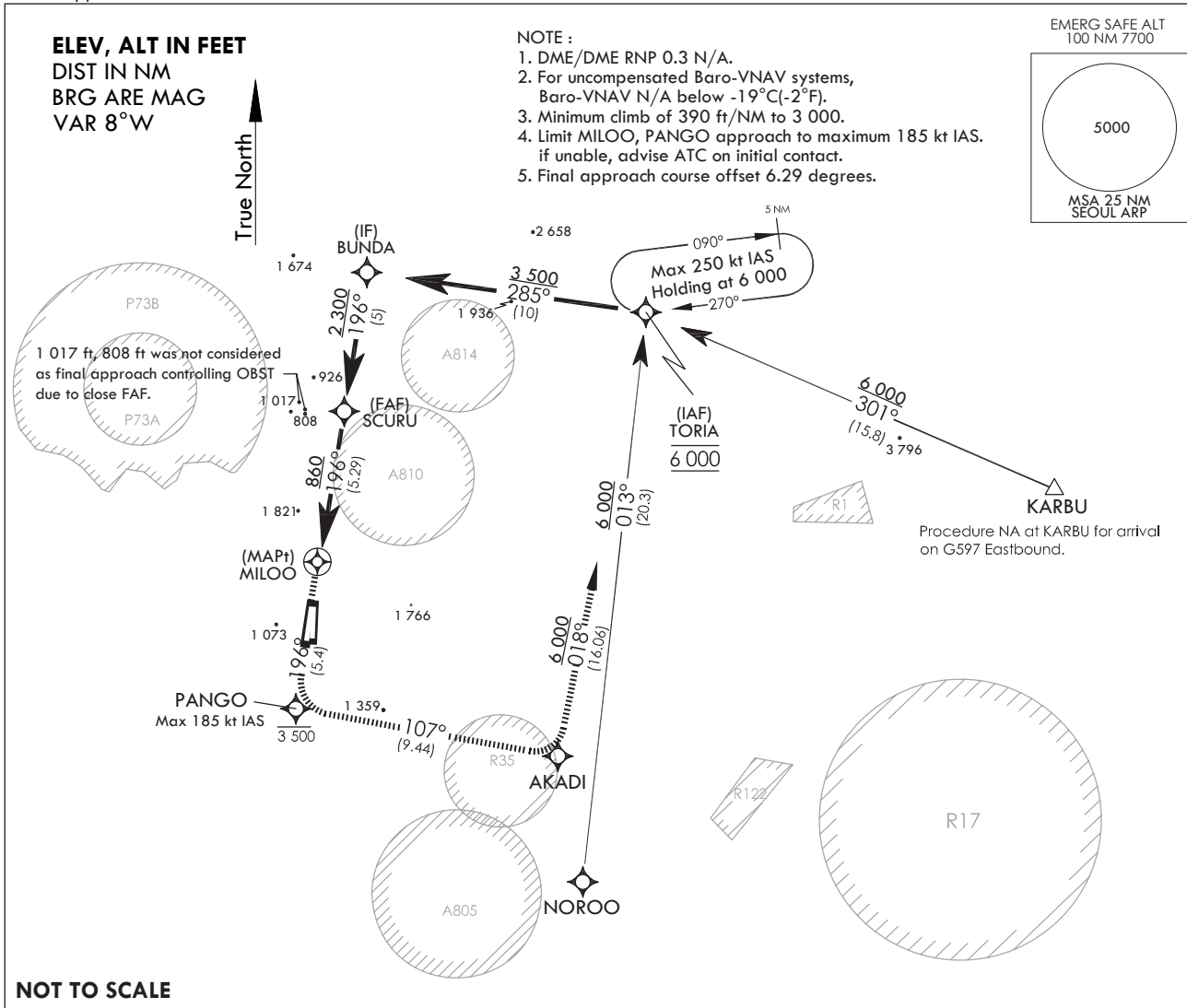
**INSTRUMENT APPROACH CHART**

AERODROME ELEV 94 ft  
HEIGHTS RELATED TO  
THR RWY 19 - ELEV 69 ft

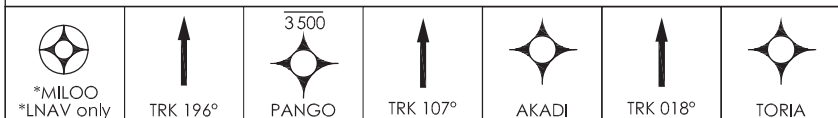
SEOUL APP 123.8 363.8  
SEOUL TWR 126.2  
236.6 234.5

**SEOUL/Seoul (RKSM)  
RNAV(GNSS) RWY 19**

Note : Approach and Circle to land under U.S TERPS.

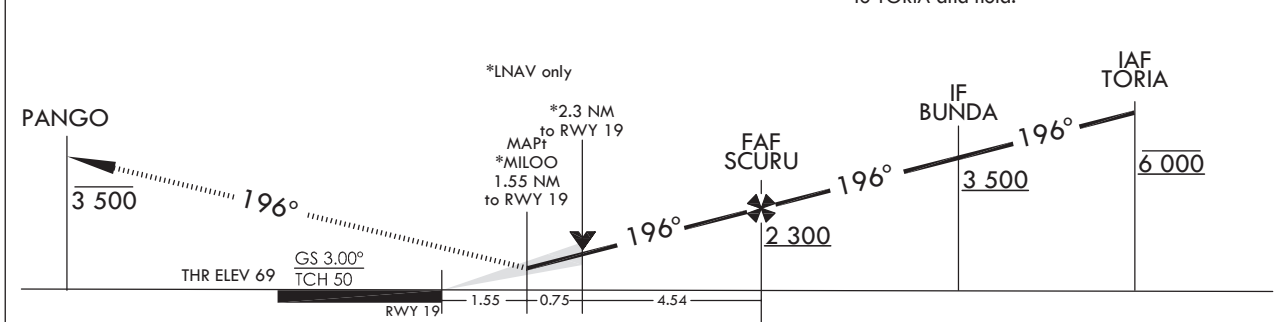


NOT TO SCALE



**MISSED APPROACH**

Climb on track 196° to cross PANGO at or below 3 500, then climbing left turn to 6 000 track 107° to AKADI, then left turn track 018° to TORIA and hold.



CATEGORY	A	B	C	D	E
LNAV/VNAV DA		711-2½	642(700-2½)		N/A
LNAV MDA		860-2½	791(800-2½)		N/A
CIRCLING	1 020-2½	926(1 000-2½)	1 560-3 1 466(1 500-3)	2 260-3 2 166(2 200-3)	N/A

SEOUL/Seoul (RKSM)  
RNAV(GNSS) RWY 19

AERONAUTICAL DATA TABULATION

Instrument Approach Procedure Coding Tables

RNAV(GNSS) RWY 19

Serial Number	Path Descriptor	Waypoint Identifier	Fly -Over	Course/Track ° M(° T)	Distance (NM)	Turn Direction	Altitude (ft)	Speed (kt)	Coordinates	VPA /TCH	Navigation specification	Remarks
001	IF	TORIA	-	-	-	-	@6 000	-250	37°38'02.3748"N 127°21'30.6133"E	-	RNPAPCH	IAF
002	TF	BUNDA	-	285.1°/277.1°	10	-	+3 500	-250	37°39'16.2513"N 127°09'00.8555"E	-	RNPAPCH	IF
003	TF	SCURU	-	196.1°/188.1°	5	-	+2 300	-165	37°34'18.8855"N 127°08'07.7311"E	-	RNPAPCH	FAF
004	TF	MILOO	Y	196.1°/188.1°	5.29	-	+860	-165	37°29'04.2951"N 127°07'11.5747"E	3.0°/50	RNPAPCH	MAPt
005	TF	PANGO	-	196.1°/188.1°	5.4	-	-3 500	-185	37°23'43.154"N 127°06'14.3668"E	-	RNPAPCH	-
006	TF	AKADI	-	107.1°/099.1°	9.44	-	6 000	-250	37°22'13.0036"N 127°17'56.0695"E	-	RNPAPCH	-
007	TF	TORIA	-	018.2°/10.2°	16.06	-	+6 000	-250	37°38'02.3748"N 127°21'30.6133"E	-	RNPAPCH	-
008	HM	TORIA	-	270.0°/262.0°	-	R	@6 000	-250	37°38'02.3748"N 127°21'30.6133"E	-	RNPAPCH	HOLDING 5NM LEG

Feeder Routes

Serial Number	Path Descriptor	Waypoint Identifier	Fly -Over	Course/Track ° M(° T)	Distance (NM)	Turn Direction	Altitude (ft)	Speed (kt)	Coordinates	VPA /TCH	Navigation specification	Remarks
001	TF	KARBU	-	-	-	-	-	-	37°31'59"N 127°39'52"E	-	RNAV1	FEEDER ROUTE
002	HM	TORIA	-	300.6°/292.6°	15.8	-	+6 000	-250	37°38'02.3748"N 127°21'30.6133"E	-	RNPAPCH	HOLDING 5NM LEG

Feeder Routes

Serial Number	Path Descriptor	Waypoint Identifier	Fly -Over	Course/Track ° M(° T)	Distance (NM)	Turn Direction	Altitude (ft)	Speed (kt)	Coordinates	VPA /TCH	Navigation specification	Remarks
001	TF	NOROO	-	-	-	-	-	-	37°17'45.54"N 127°19'08.61"E	-	RNAV1	FEEDER ROUTE
002	HM	TORIA	-	13.3°/5.3°	20.34	-	+6 000	-250	37°38'02.3748"N 127°21'30.6133"E	-	RNPAPCH	HOLDING 5NM LEG

Change : Amended coordinate format.

**INSTRUMENT APPROACH CHART**

AERODROME ELEV **94** ft  
HEIGHTS RELATED TO  
THR RWY 20 - ELEV **70** ft

SEOUL APP 123.8 363.8  
SEOUL TWR 126.2  
236.6 234.5

**SEOUL/Seoul (RKSM)  
RNAV(GNSS) RWY 20**

Note : Approach and Circle to land under U.S TERPS.

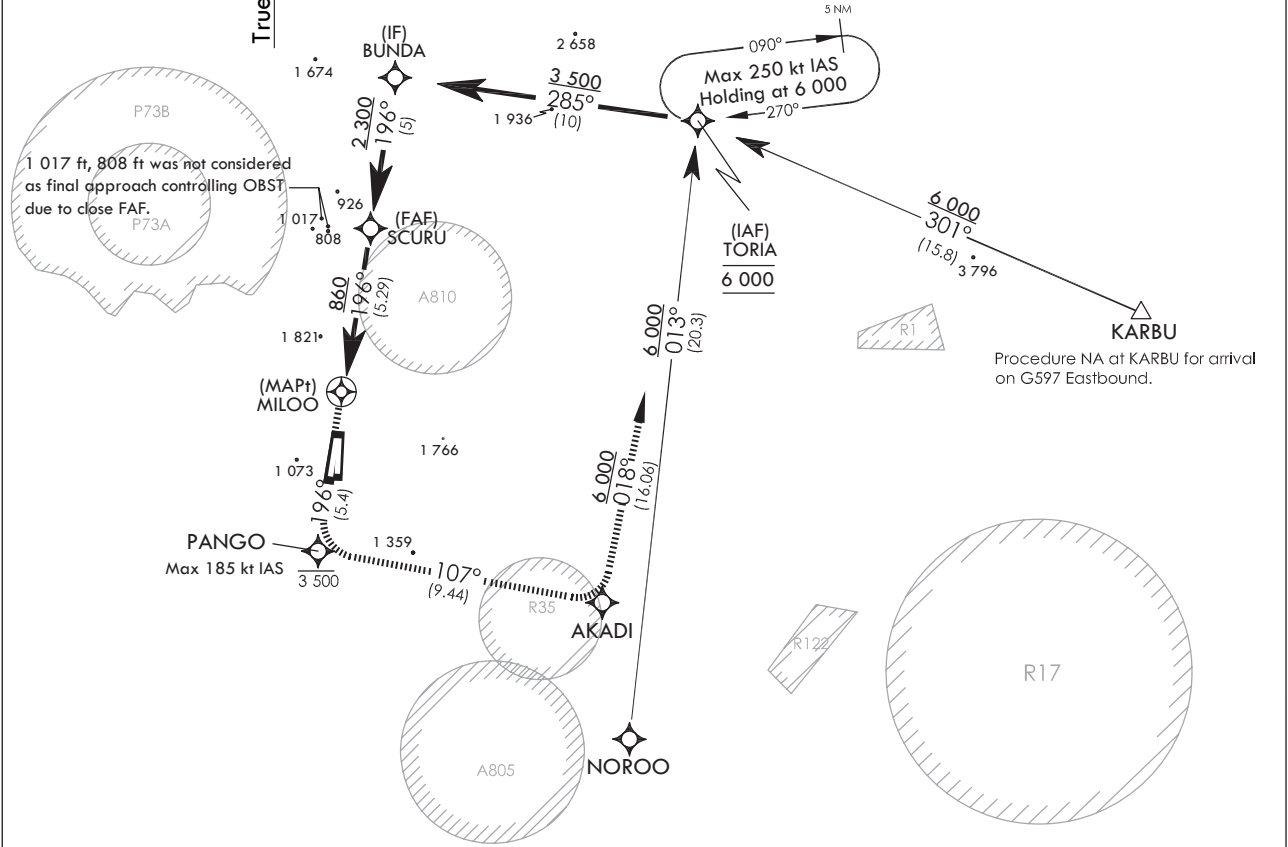
**ELEV, ALT IN FEET  
DIST IN NM  
BRG ARE MAG  
VAR 8° W**

- NOTE :
1. DME/DME RNP 0.3 N/A.
  2. For uncompensated Baro-VNAV systems, Baro-VNAV N/A below -19°C (-2°F).
  3. Minimum climb of 390 ft/NM to 3 000.
  4. Limit MILOO, PANGO approach to maximum 185 kt IAS. if unable, advise ATC on initial contact.

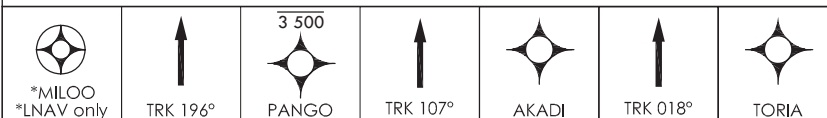
EMERG SAFE ALT  
100 NM 7700

5000

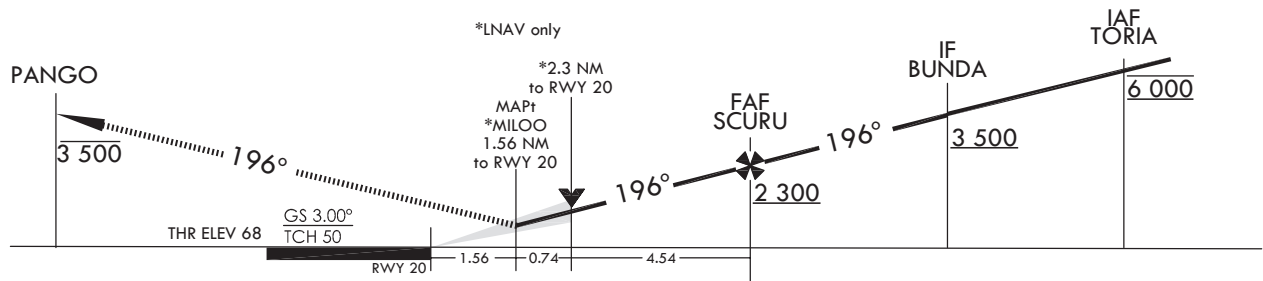
MSA 25 NM  
SEOUL ARP



NOT TO SCALE



**MISSED APPROACH**  
Climb on track 196° to cross PANGO at or below 3 500 ft, then climbing left turn to 6 000 ft track 107° to AKADI, then left turn track 018° to TORIA and hold.



CATEGORY	A	B	C	D	E
LANV/ VNAV DA		711-2½	641(700-2½)		N/A
LNAV MDA		860-2½	790(800-2½)		N/A
CIRCLING	1 020-2½	926(1 000-2½)	1 560-3 1 466(1 500-3)	2 260-3 2 166(2 200-3)	N/A

SEOUL/Seoul (RKSM)  
RNAV(GNSS) RWY 20

AERONAUTICAL DATA TABULATION

Instrument Approach Procedure Coding Tables

RNAV(GNSS) RWY 20

Serial Number	Path Descriptor	Waypoint Identifier	Fly -Over	Course/Track ° M(° T)	Distance (NM)	Turn Direction	Altitude (ft)	Speed (kt)	Coordinates	VPA /TCH	Navigation specification	Remarks
001	IF	TORIA	-	-	-	-	@6 000	-250	37°38'02.3748"N 127°21'30.6133"E	-	RNPAPCH	IAF
002	TF	BUNDA	-	285.1°/277.1°	1.0	-	+3 500	-250	37°39'16.2513"N 127°09'00.8555"E	-	RNPAPCH	IF
003	TF	SCURU	-	196.1°/188.1°	5	-	+2 300	-165	37°34'18.8855"N 127°08'07.7311"E	-	RNPAPCH	FAF
004	TF	MILOO	Y	196.1°/188.1°	5.29	-	+860	-165	37°29'04.2951"N 127°07'11.5747"E	3.0°/50	RNPAPCH	MAPt
005	TF	PANGO	-	196.1°/188.1°	5.4	-	-3 500	-185	37°23'43.154"N 127°06'14.3668"E	-	RNPAPCH	-
006	TF	AKADI	-	107.1°/099.1°	9.44	-	6 000	-250	37°22'13.0036"N 127°17'56.0695"E	-	RNPAPCH	-
007	TF	TORIA	-	018.2°/10.2°	16.058	-	+6 000	-250	37°38'02.3748"N 127°21'30.6133"E	-	RNPAPCH	-
008	HM	TORIA	-	270.0°/262.0°	-	R	@6 000	-250	37°38'02.3748"N 127°21'30.6133"E	-	RNPAPCH	HOLDING 5NM LEG

Feeder Routes

Serial Number	Path Descriptor	Waypoint Identifier	Fly -Over	Course/Track ° M(° T)	Distance (NM)	Turn Direction	Altitude (ft)	Speed (kt)	Coordinates	VPA /TCH	Navigation specification	Remarks
001	TF	KARBU	-	-	-	-	-	-	37°31'59"N 127°39'52"E	-	RNAV1	FEEDER ROUTE
002	HM	TORIA	-	300.6°/292.6°	15.8	-	+6 000	-250	37°38'02.3748"N 127°21'30.6133"E	-	RNPAPCH	HOLDING 5NM LEG

Feeder Routes

Serial Number	Path Descriptor	Waypoint Identifier	Fly -Over	Course/Track ° M(° T)	Distance (NM)	Turn Direction	Altitude (ft)	Speed (kt)	Coordinates	VPA /TCH	Navigation specification	Remarks
001	TF	NOROO	-	-	-	-	-	-	37°17'45.54"N 127°19'08.61"E	-	RNAV1	FEEDER ROUTE
002	HM	TORIA	-	13.3°/5.3°	20.34	-	+6 000	-250	37°38'02.3748"N 127°21'30.6133"E	-	RNPAPCH	HOLDING 5NM LEG

Change : Amended coordinate format.



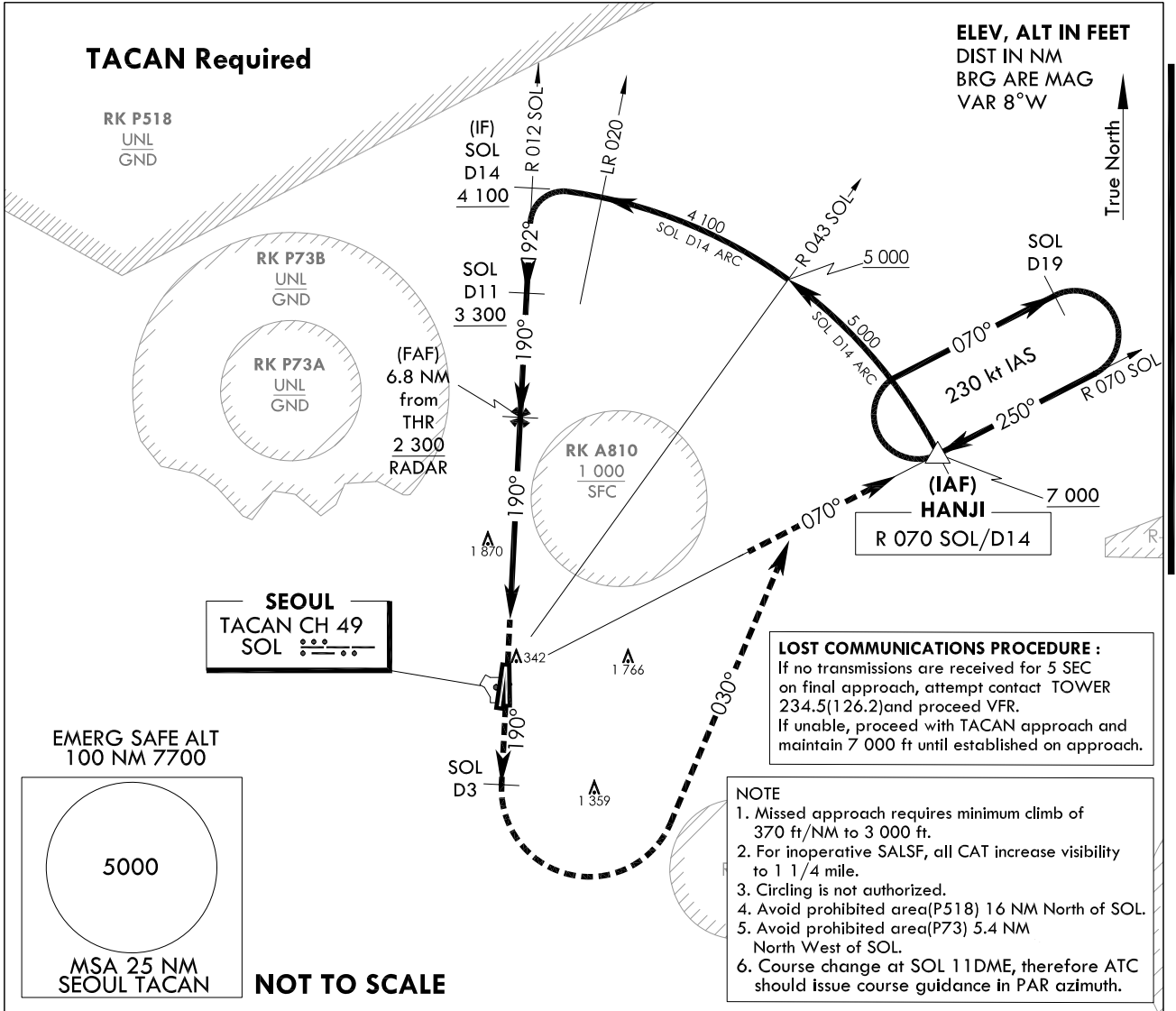
**INSTRUMENT  
APPROACH  
CHART**

**AERODROME ELEV 93 ft**  
HEIGHTS RELATED TO  
THR RWY 19 - ELEV 68 ft

SEOUL APP 123.8 363.8  
SEOUL TWR 126.2  
234.5 236.6

**SEOUL/Seoul(RKSM)**  
**PAR Z**  
**RWY 19**

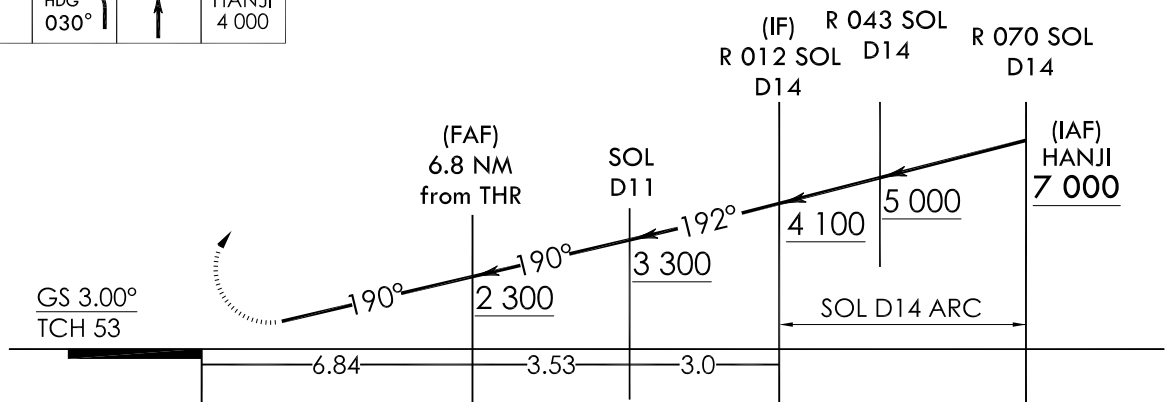
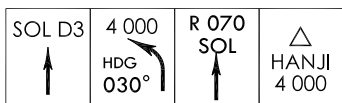
Note : Approach and Circle to land under U.S. TERPS.



TRANSITION ALT 14 000  
TRANSITION LVL FL 140

Missed Approach Climb Rate table

KNOTS	60	120	180	240	300	TO
V/V(fpm)	370	740	1 110	1 480	1 850	3 000



**MISSED APPROACH**

Climb to 4 000 ft via HDG 190° to SOL 3 DME and climbing left turn HDG 030° to intercept R 070 SOL, then climb to 7 000 ft on R 070 SOL to HANJI and hold, continue climb-in-holding to 7 000 ft.

CATEGORY	A	B	C	D	E
S-PAR RWY 19		465 / 55	393 (400 - 1)		

**INTENTIONALLY**

**LEFT**

**BLANK**

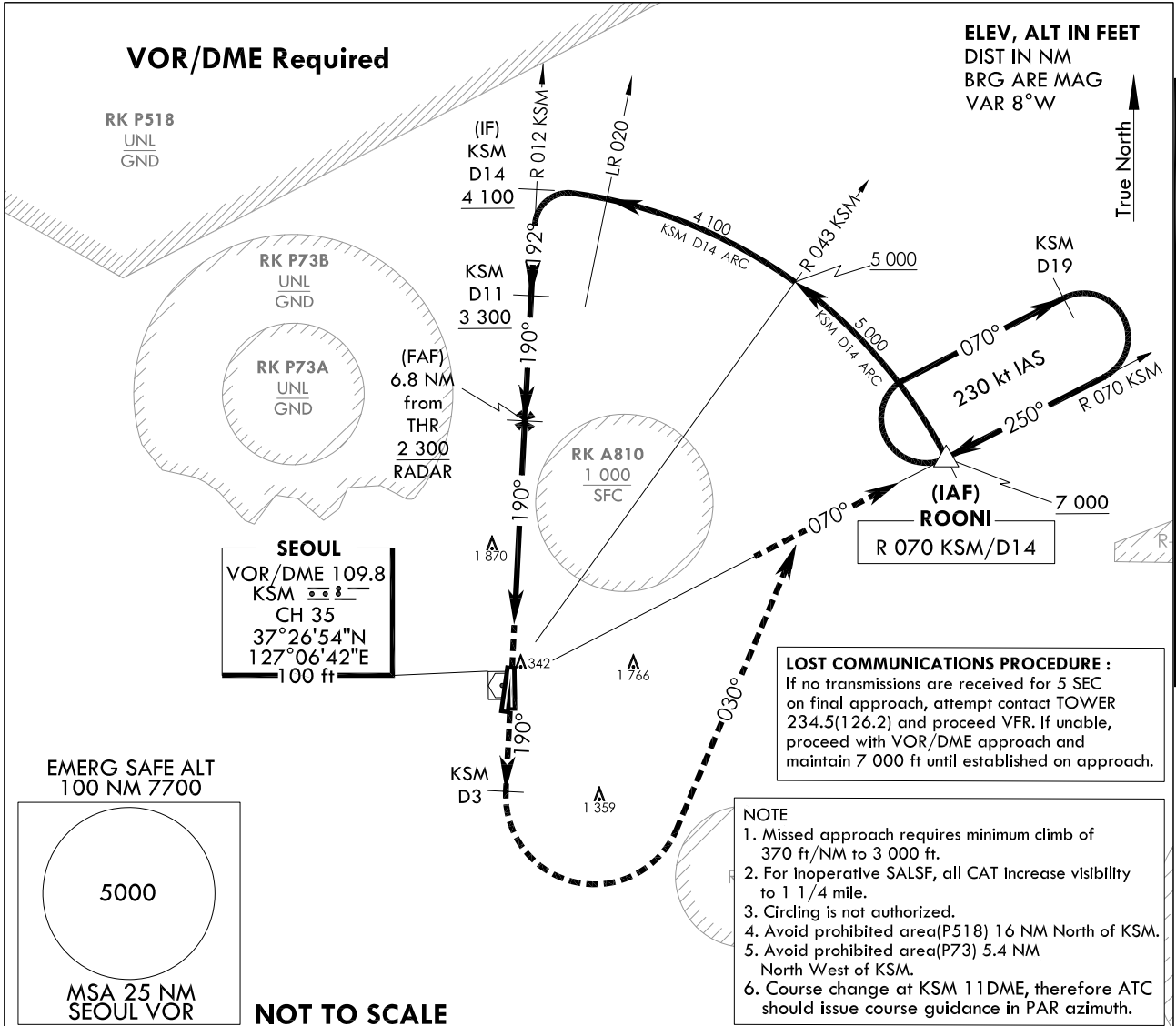
**INSTRUMENT  
APPROACH  
CHART**

**AERODROME ELEV 93 ft**  
HEIGHTS RELATED TO  
THR RWY 19 - ELEV 68 ft

SEOUL APP 123.8 363.8  
SEOUL TWR 126.2  
234.5 236.6

**SEOUL/Seoul(RKSM)**  
**PAR Y**  
**RWY 19**

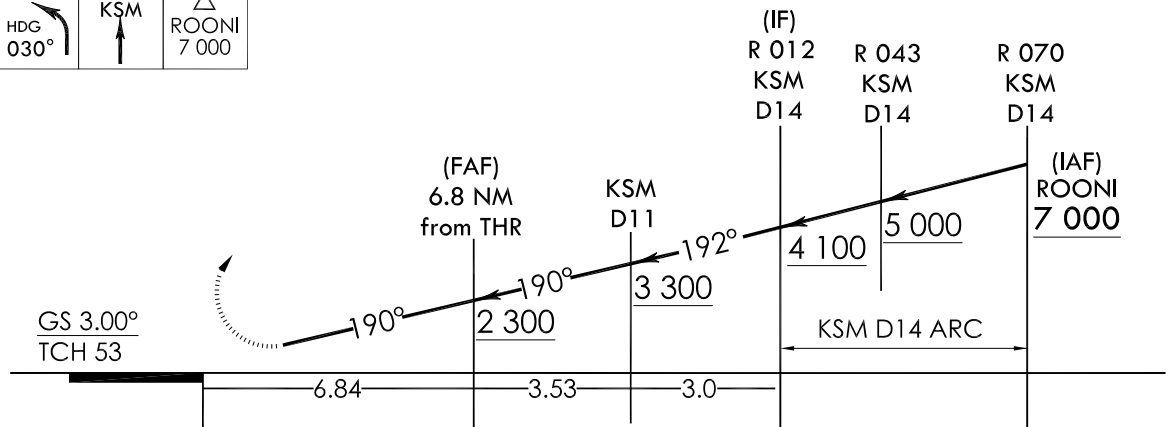
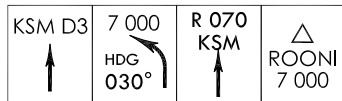
Note : Approach and Circle to land under U.S. TERPS.



TRANSITION ALT 14 000  
TRANSITION LVL FL 140

Missed Approach Climb Rate table

KNOTS	60	120	180	240	300	TO
V/V(fpm)	370	740	1 110	1 480	1 850	3 000



**MISSED APPROACH**  
Climb to 4 000 ft via HDG 190° to KSM 3DME and climbing left turn HDG 030° to intercept R 070 KSM, then climb to 7 000 ft on R 070 KSM to ROONI and hold, continue climb-in-holding to 7 000 ft.

CATEGORY	A	B	C	D	E
S-PAR RWY 19		465 / 55	393 (400 - 1)		

Change : Amended coordinate and radial format.

**INTENTIONALLY**

**LEFT**

**BLANK**

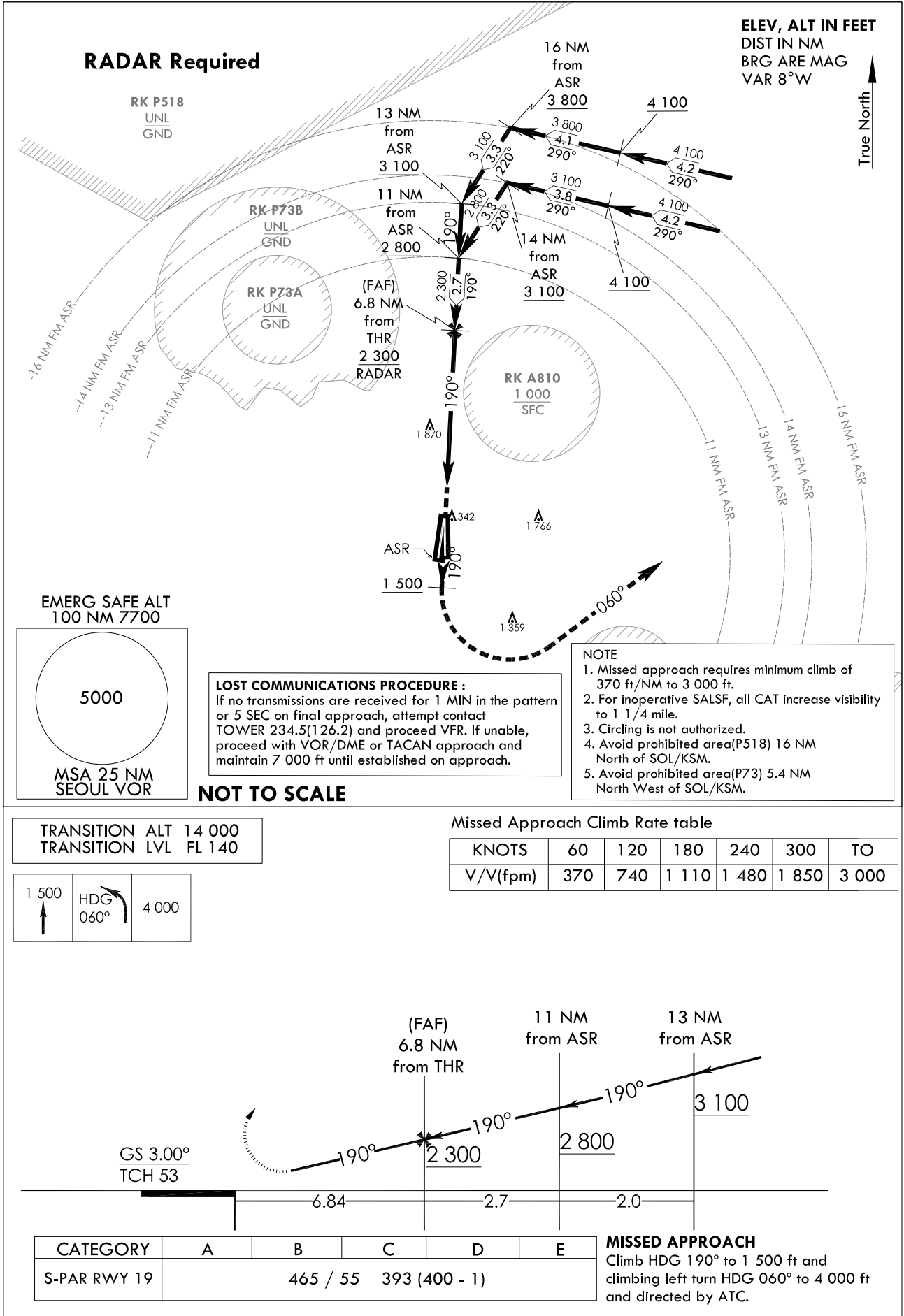
**INSTRUMENT  
APPROACH  
CHART**

**AERODROME ELEV 93 ft**  
HEIGHTS RELATED TO  
THR RWY 19 - ELEV 68 ft

SEOUL APP 123.8 363.8  
SEOUL TWR 126.2  
234.5 236.6

**SEOUL/Seoul(RKSM)**  
PAR X  
RWY 19

Note : Approach and Circle to land under U.S. TERPS.



Change : Information of procedure.

**INTENTIONALLY**

**LEFT**

**BLANK**

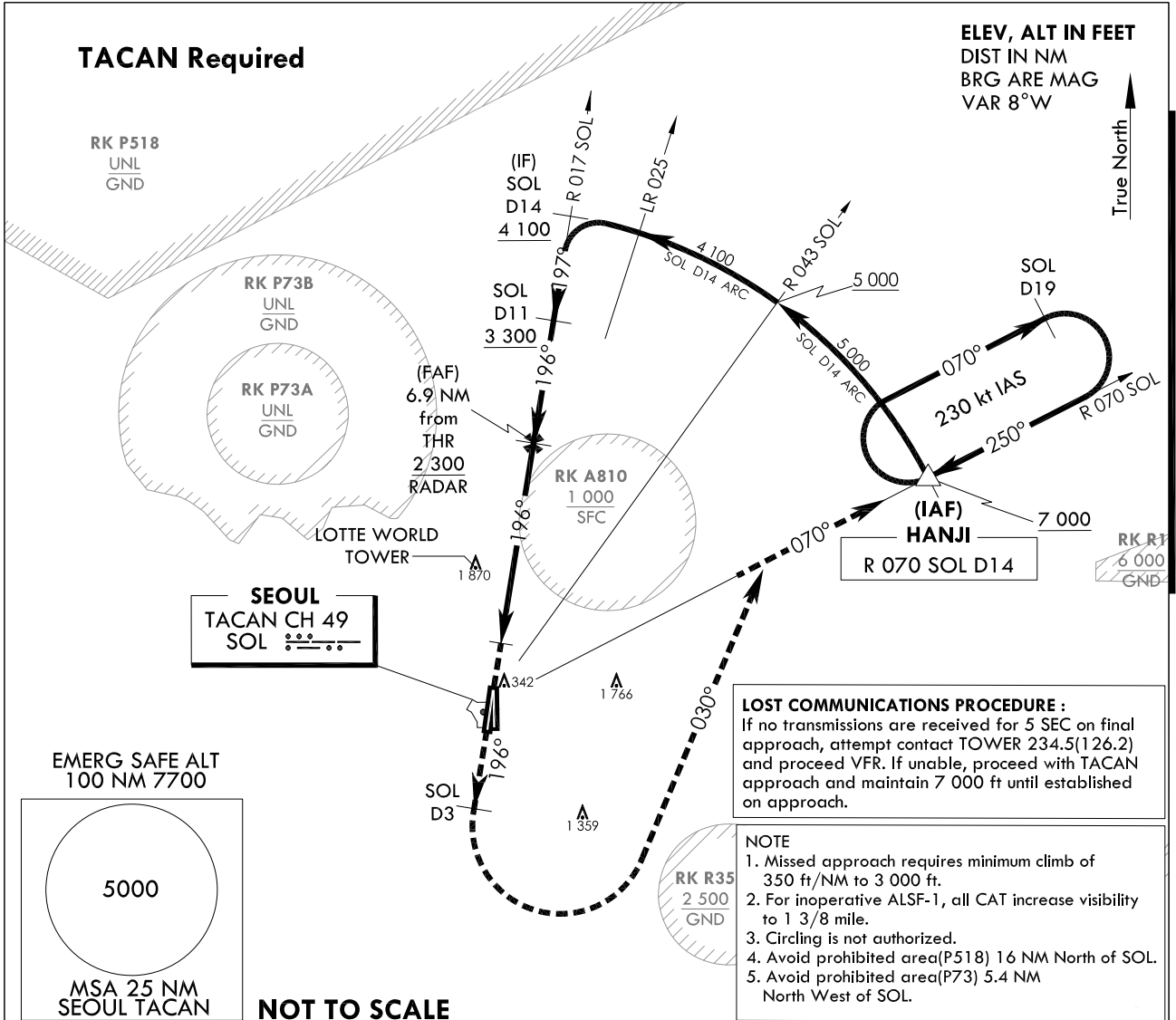
**INSTRUMENT  
APPROACH  
CHART**

**AERODROME ELEV 93 ft**  
HEIGHTS RELATED TO  
THR RWY 20 - ELEV 68 ft  
HIGHEST ELEV TDZ 69 ft

SEOUL APP 123.8 363.8  
SEOUL TWR 126.2  
234.5 236.6

**SEOUL/Seoul(RKSM)**  
PAR Z  
RWY 20

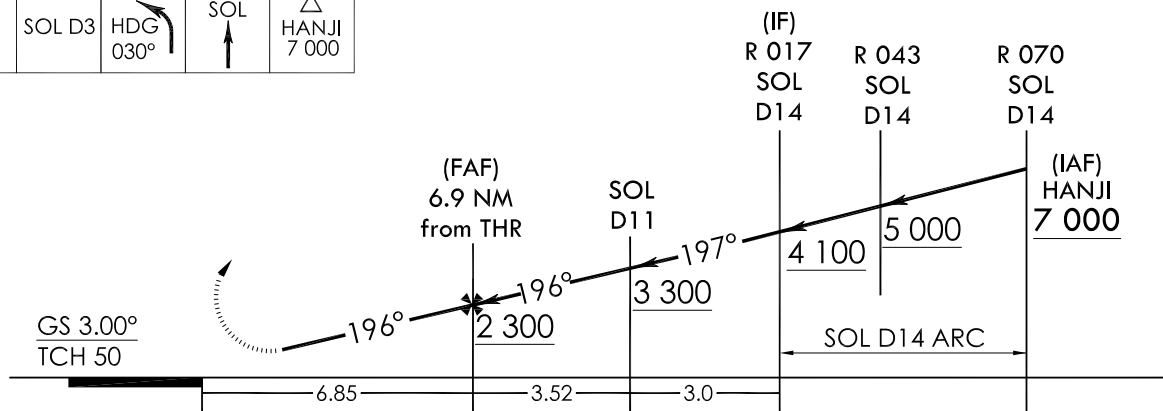
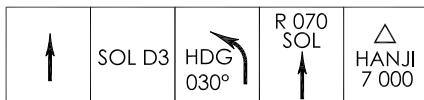
Note : Approach and Circle to land under U.S. TERPS.



TRANSITION ALT 14 000  
TRANSITION LVL FL 140

Missed Approach Climb Rate table

KNOTS	60	120	180	240	300	TO
V/V(fpm)	350	700	1 050	1 400	1 750	3 000



NOTE : VGSI and PAR glidepath not coincident : (VGSI Angle 3.00° / TCH 61).

**MISSED APPROACH**

Climb to 4 000 ft via HDG 196° to SOL 3DME and climbing left turn HDG 030° to intercept R 070 SOL, then climb to 7 000 ft on R 070 SOL to HANJI and hold, continue climb-in-holding to 7 000 ft.

CATEGORY	A	B	C	D	E
S-PAR RWY 20		473 / 45	404 (400 - 7/8)		N/A

Change : Amended radial format.

**INTENTIONALLY**

**LEFT**

**BLANK**



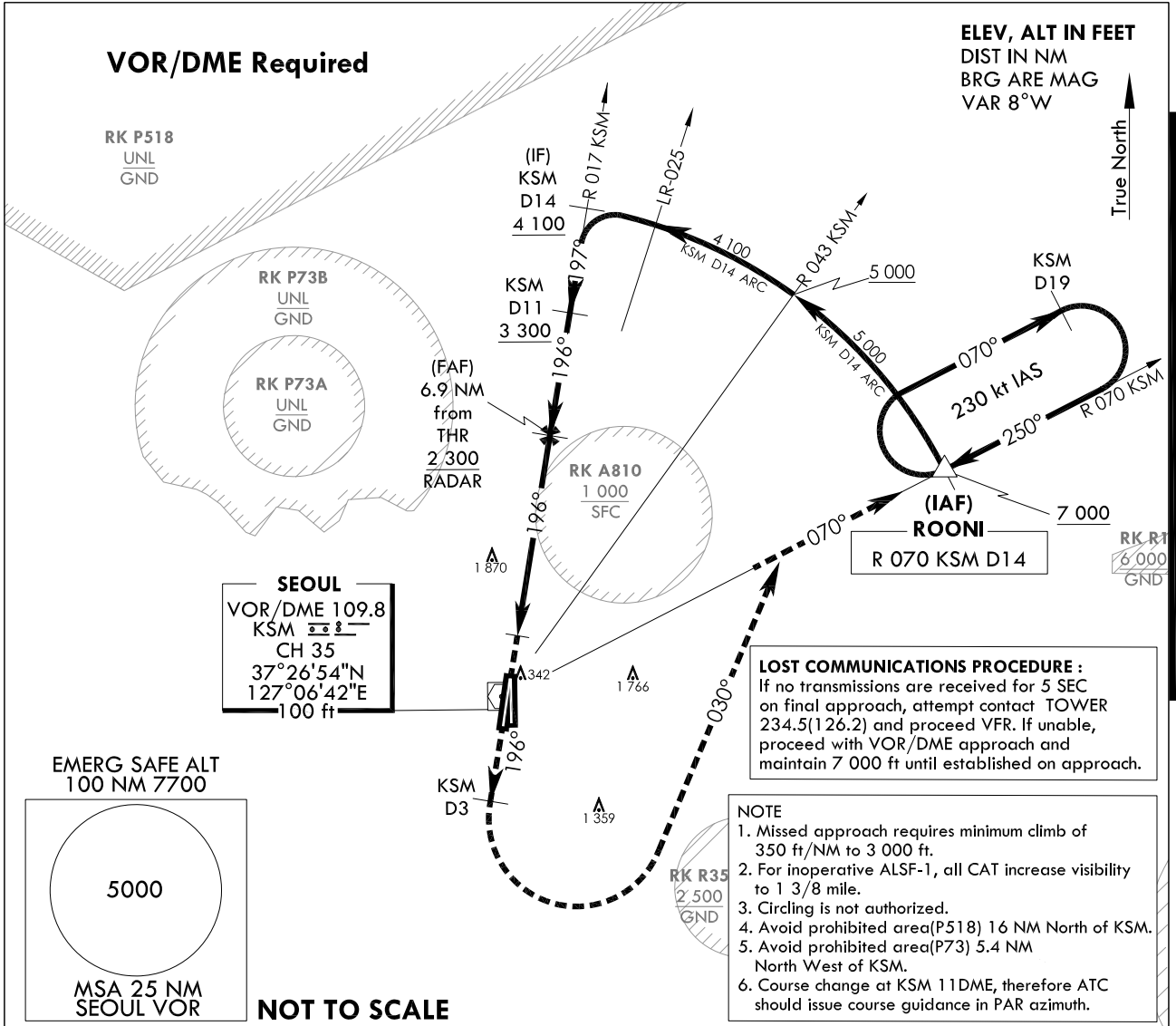
**INSTRUMENT  
APPROACH  
CHART**

**AERODROME ELEV 93 ft**  
HEIGHTS RELATED TO  
THR RWY 20 - ELEV 68 ft  
HIGHEST ELEV TDZ 69 ft

SEOUL APP 123.8 363.8  
SEOUL TWR 126.2  
234.5 236.6

**SEOUL/Seoul(RKSM)**  
PAR Y  
RWY 20

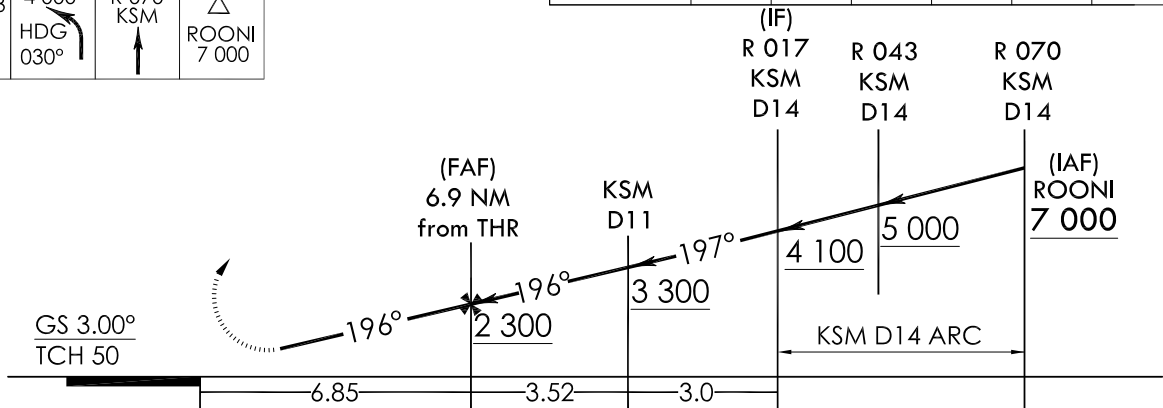
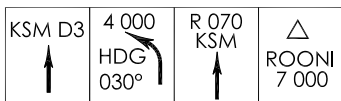
Note : Approach and Circle to land under U.S. TERPS.



TRANSITION ALT	14 000
TRANSITION LVL	FL 140

Missed Approach Climb Rate table

KNOTS	60	120	180	240	300	TO
V/V(fpm)	350	700	1 050	1 400	1 750	3 000



NOTE : VGSI and PAR glidepath not coincident : (VGSI Angle 3.00° / TCH 61).

**MISSED APPROACH**

Climb to 4 000 ft via HDG 196° to KSM 3DME and climbing left turn HDG 030° to intercept R 070 KSM, then climb to 7 000 ft on R 070 KSM to ROONI and hold, continue climb-in-holding to 7 000 ft.

CATEGORY	A	B	C	D	E
S-PAR RWY 20	473 / 45	404 (400 - 7/8)			N/A

Change : Amended coordinate and radial format.

**INTENTIONALLY**

**LEFT**

**BLANK**

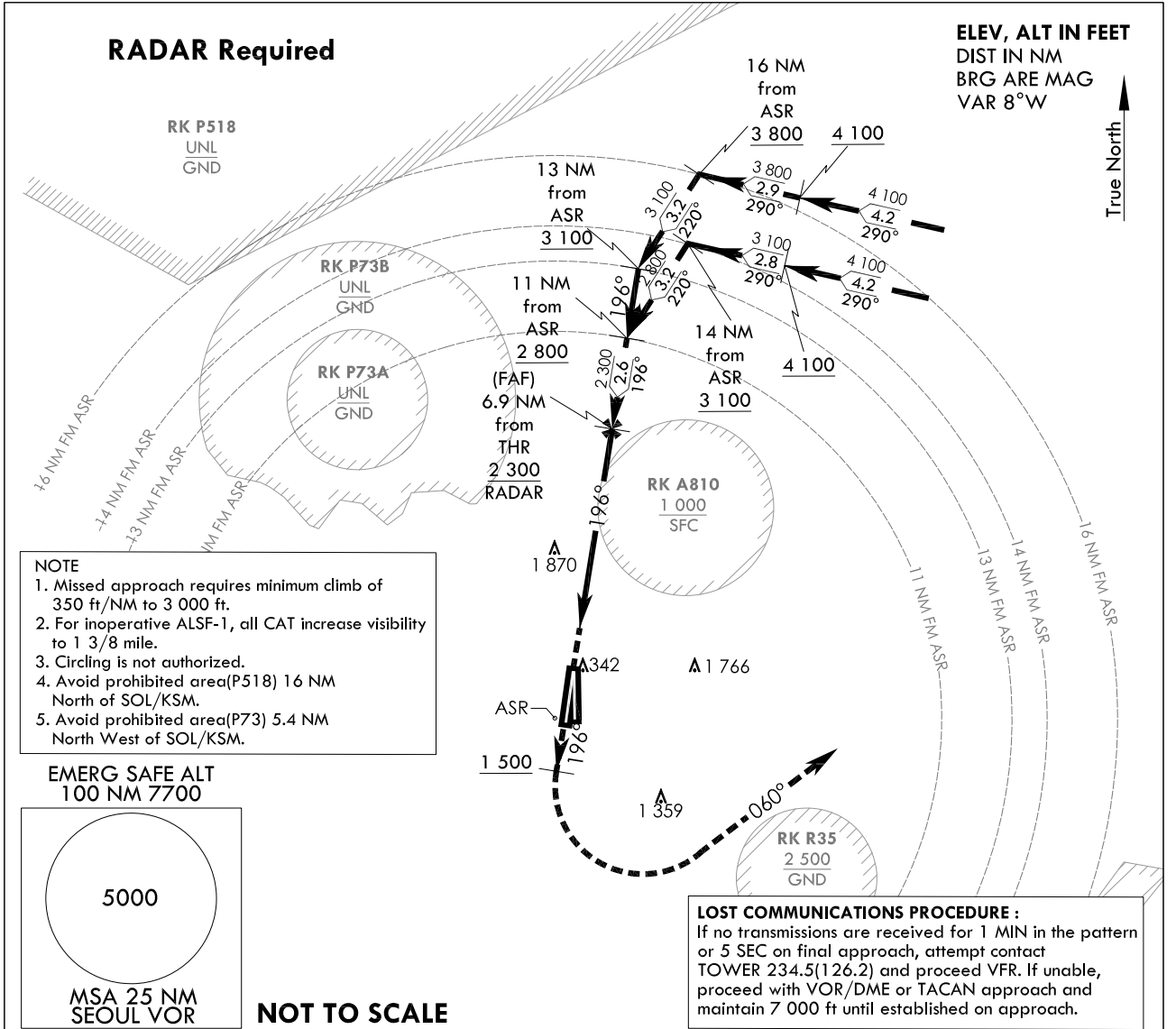
**INSTRUMENT  
APPROACH  
CHART**

**AERODROME ELEV 93 ft**  
HEIGHTS RELATED TO  
THR RWY 20 - ELEV 68 ft  
HIGHEST ELEV TDZ 69 ft

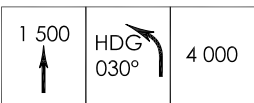
SEOUL APP 123.8 363.8  
SEOUL TWR 126.2  
234.5 236.6

**SEOUL/Seoul(RKSM)**  
PAR X  
RWY 20

Note : Approach and Circle to land under U.S. TERPS.

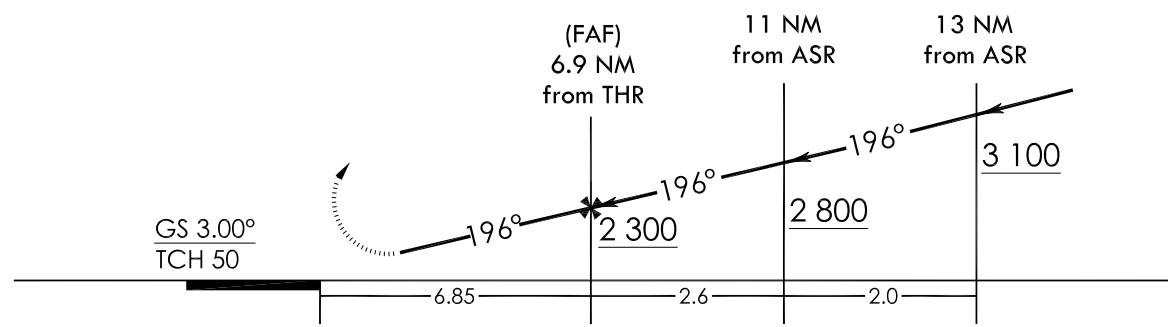


TRANSITION ALT 14 000  
TRANSITION LVL FL 140



Missed Approach Climb Rate table

KNOTS	60	120	180	240	300	TO
V/V(fpm)	350	700	1 050	1 400	1 750	3 000



NOTE : VGSI and PAR glidepath not coincident : (VGSI Angle 3.00° / TCH 61).

CATEGORY	A	B	C	D	E
S-PAR RWY 20		473 / 45	404 (400 - 7/8)		

**MISSED APPROACH**  
Climb HDG 196° to 1 500 ft and climbing left turn HDG 060° to 4 000 ft and directed by ATC.

Change : Information of procedure.

**INTENTIONALLY**

**LEFT**

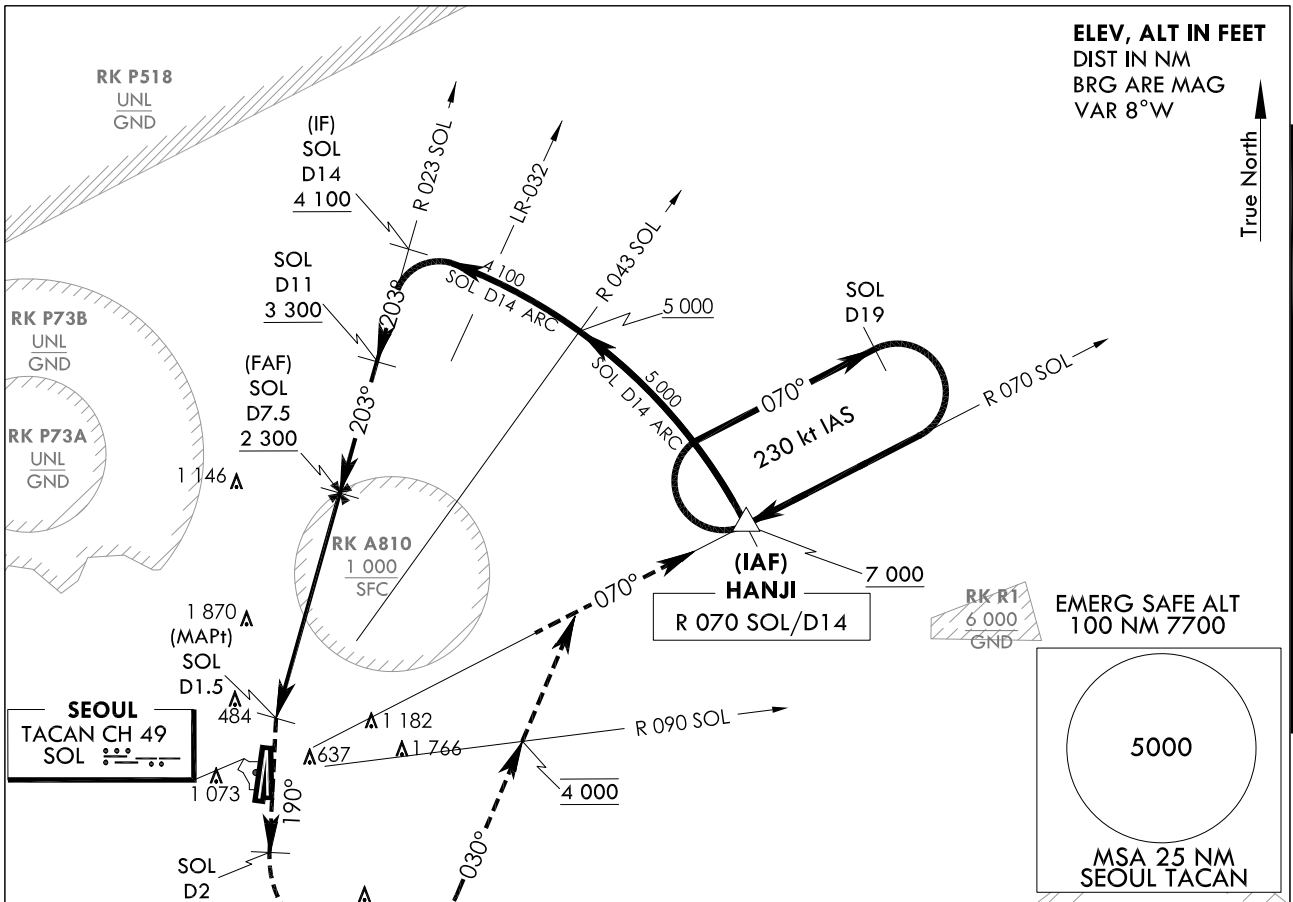
**BLANK**

**INSTRUMENT  
APPROACH  
CHART**

**AERODROME ELEV 93 ft**  
HEIGHTS RELATED TO  
THR RWY 19 - ELEV 68 ft

SEOUL APP 123.8 363.8  
SEOUL TWR 126.2  
234.5 236.6

**SEOUL/Seoul(RKSM)**  
**TACAN**  
**RWY 19**



**ELEV, ALT IN FEET**  
DIST IN NM  
BRG ARE MAG  
VAR 8°W

True North ↑

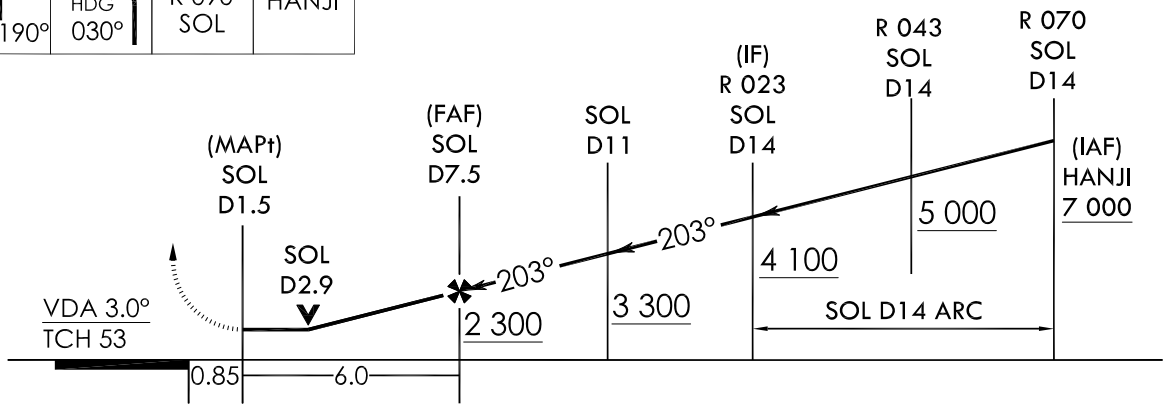
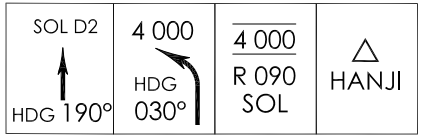
**NOT TO SCALE**

- NOTE:**
1. Circling not authorized West of RWY 19 - RWY 01/02.
  2. For inoperative SALSF, increase S-TAC RWY 19 CAT A visibility to RVR 5 500 and CAT B visibility to RVR 6 000 and CAT C,D visibility to 2 miles.
  3. Missed approach requires minimum climb of 390 ft/NM to 3 000 ft.
  4. Avoid prohibited area (P518) 16 NM North of SOL.
  5. Avoid prohibited area (P73) 5.4 NM North West of SOL.
  6. 1 146 ft was not considered as final approach controlling OBST due to close to PFAF.

TRANSITION ALT 14 000  
TRANSITION LVL FL 140

**Missed Approach Climb Rate table**

KNOTS	60	120	180	240	300	TO
V/V(fpm)	390	770	1 150	1 530	1 910	3 000



CATEGORY	A	B	C	D	E
S-TAC RWY 19	820 / 40 748 (800 - 3/4)	820 / 55 748 (800 - 1)	820 - 1 7/8 748 (800 - 1 7/8)		N/A
Circling	1 020 - 1 1/4 927(1 000-1 1/4)		1 560 - 3 1 467(1 500-3)	2 260 - 3 2 167(2 200-3)	N/A

**MISSED APPROACH:**  
Climb HDG 190° to SOL 2 DME and climbing left turn HDG 030° to cross R 090 SOL at 4 000 ft, then R 070 SOL to HANJI and hold, continue climb-in-holding to 7 000 ft.

Change : Amended coordinate and radial format.

**INTENTIONALLY**

**LEFT**

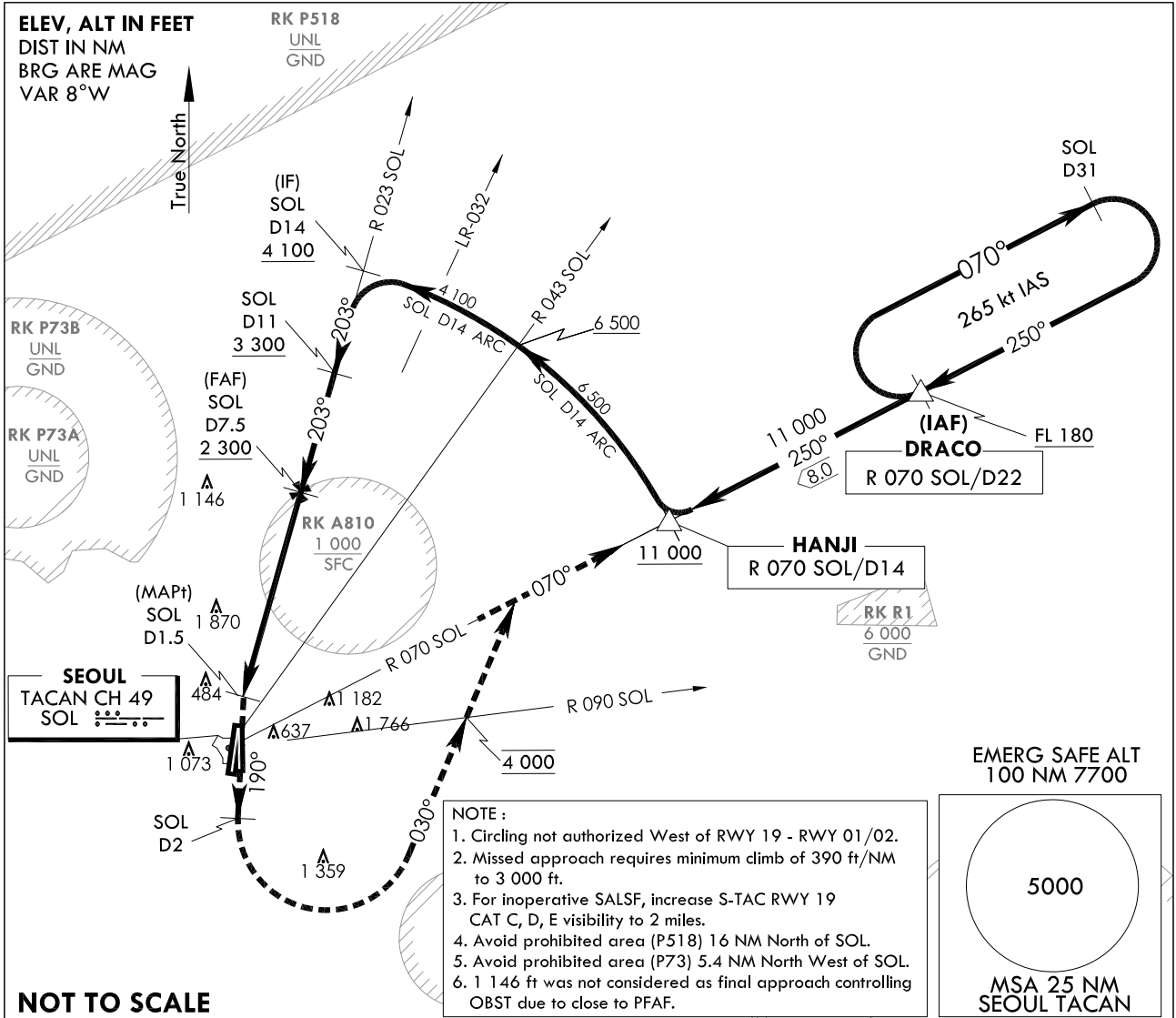
**BLANK**

**INSTRUMENT  
APPROACH  
CHART**

**AERODROME ELEV 93 ft**  
HEIGHTS RELATED TO  
THR RWY 19 - ELEV 68 ft

SEOUL APP 123.8 363.8  
SEOUL TWR 126.2  
234.5 236.6

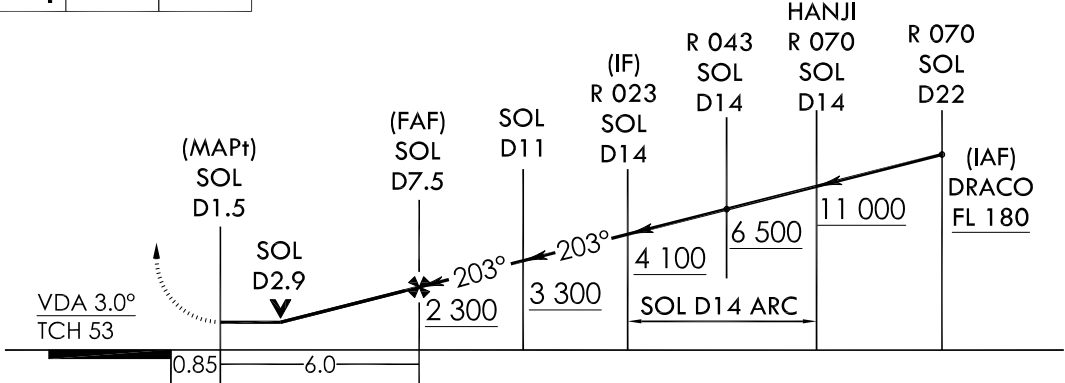
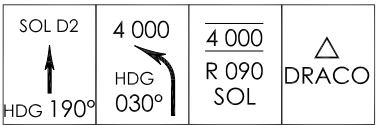
**SEOUL/Seoul(RKSM)**  
**HI-TACAN**  
RWY 19



TRANSITION ALT 14 000  
TRANSITION LVL FL 140

Missed Approach Climb Rate table

KNOTS	60	120	180	240	300	TO
V/V(fpm)	390	770	1 150	1 530	1 910	3 000



CATEGORY	A	B	C	D	E
S-TAC RWY 19	N/A			820 - 1 $\frac{7}{8}$ 748 (800 - 1 $\frac{7}{8}$ )	
Circling	N/A		1 560 - 3 1 467(1 500-3)	2 260 - 3 2 167(2 200-3)	

**MISSED APPROACH**  
Climb HDG 190° to SOL 2 DME and climbing left turn HDG 030° to cross R 090 SOL at 4 000 ft, then R 070 SOL to DRACO and hold, continue climb-in-holding to FL 180.

Change : Amended radial format.

**INTENTIONALLY**

**LEFT**

**BLANK**



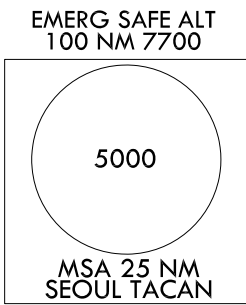
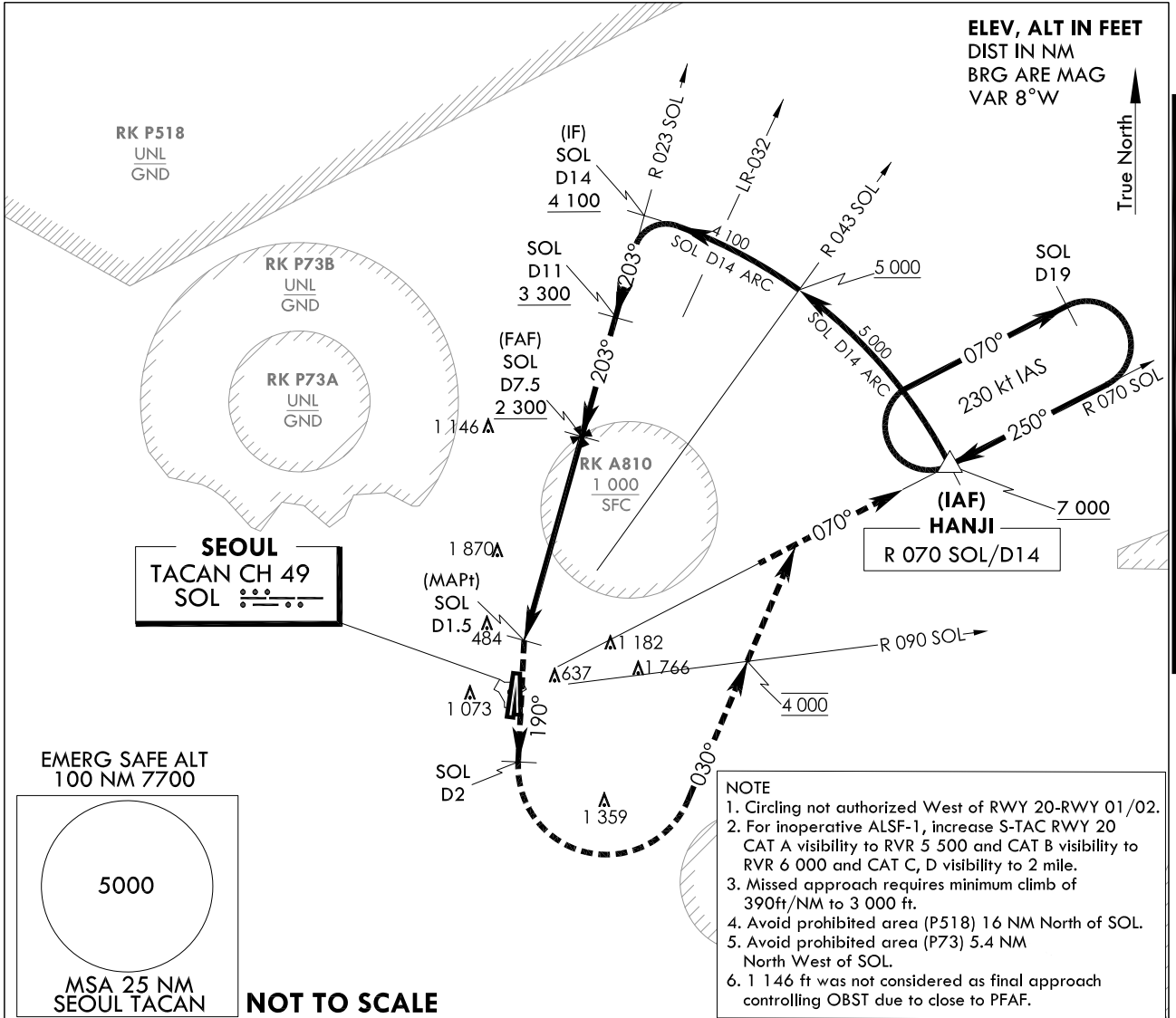
**INSTRUMENT  
APPROACH  
CHART**

**AERODROME ELEV 93 ft**  
HEIGHTS RELATED TO  
THR RWY 20 - ELEV 68 ft  
HIGHEST ELEV TDZ 69 ft

SEOUL APP 123.8 363.8  
SEOUL TWR 126.2  
234.5 236.6

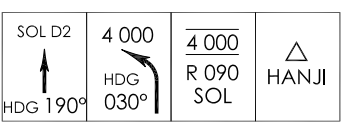
**SEOUL/Seoul(RKSM)  
TACAN  
RWY 20**

Note : Approach and Circle to land under U.S. TERPS.



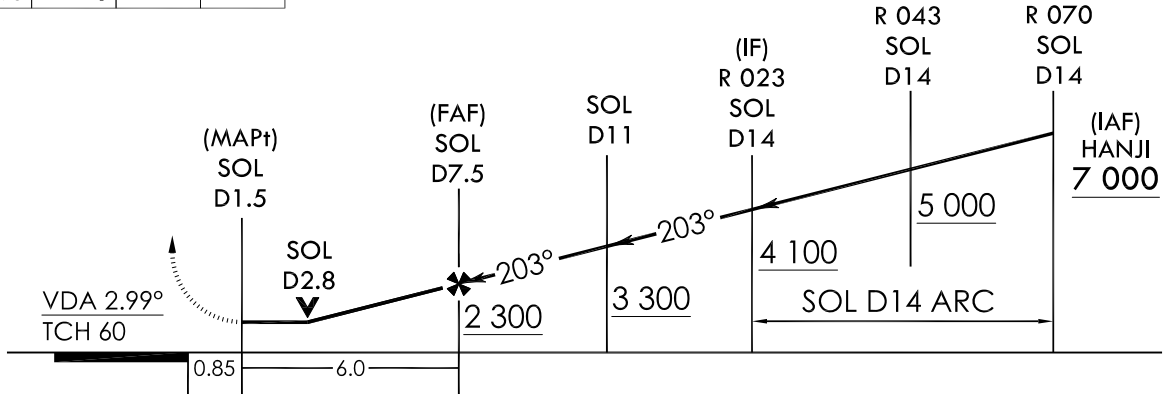
**NOT TO SCALE**

TRANSITION ALT 14 000  
TRANSITION LVL FL 140



**Missed Approach Climb Rate table**

KNOTS	60	120	180	240	300	TO
V/V(fpm)	390	770	1 150	1 530	1 910	3 000



CATEGORY	A	B	C	D	E
S-TAC RWY 20	820 / 35 751 (800 - 3/8)	820 / 40 751 (800 - 3/4)	820 - 1 3/4 751 (800 - 1 3/4)		N/A
Circling	1 020 - 1 1/4 927 (1 000 - 1 1/4)		1 560 - 3 1 467 (1 500 - 3)	2 260 - 3 2 167 (2 200 - 3)	N/A

**MISSED APPROACH**  
Climb HDG 190° to SOL 2DME and climbing left turn HDG 030° to cross R 090 SOL at 4 000 ft, then R 070 SOL to HANJI and hold, continue climb-in-holding to 7 000 ft.

Change : Amended radial format.

**INTENTIONALLY**

**LEFT**

**BLANK**

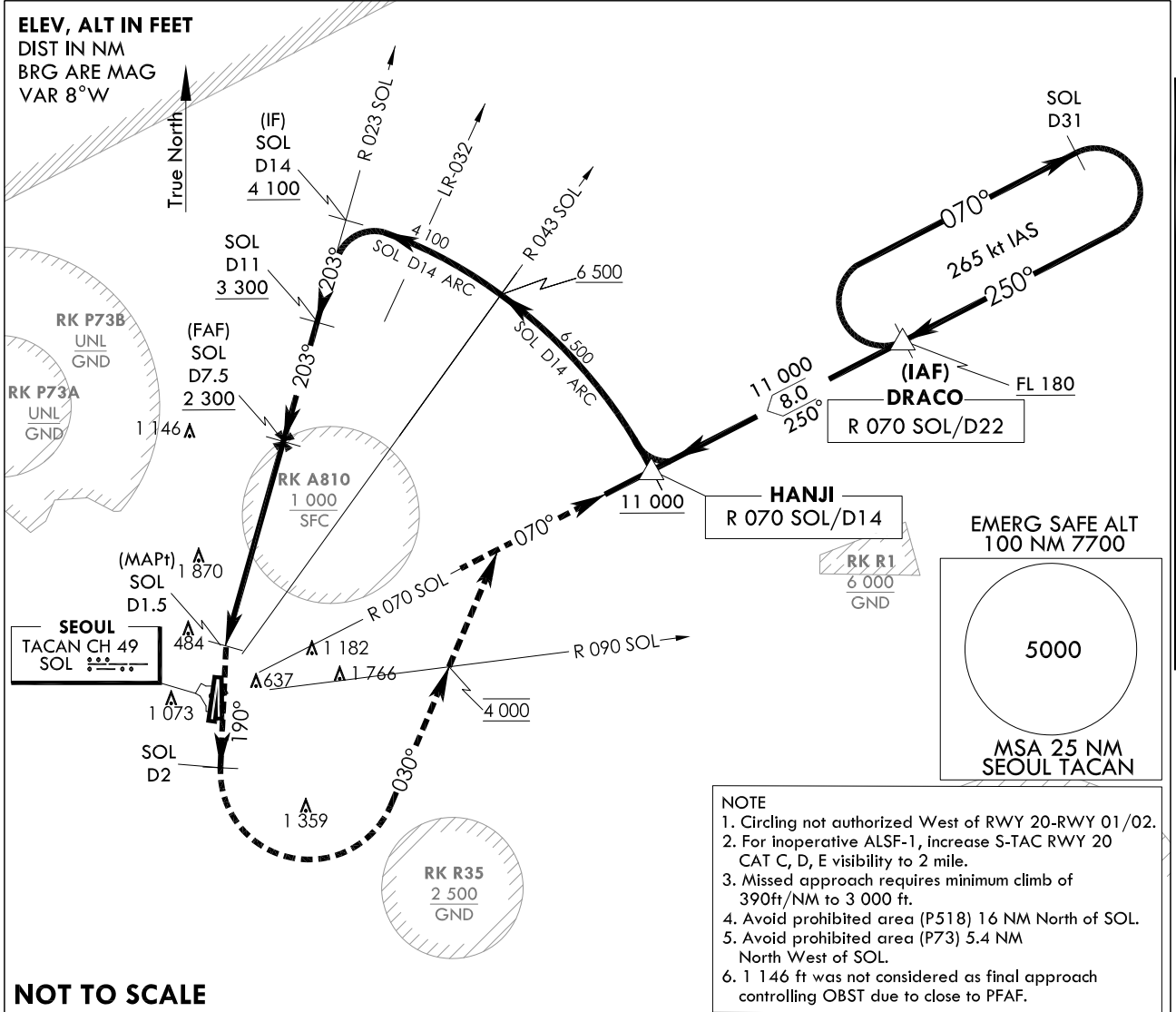
**INSTRUMENT  
APPROACH  
CHART**

**AERODROME ELEV 93 ft**  
HEIGHTS RELATED TO  
THR RWY 20 - ELEV 68 ft  
HIGHEST ELEV TDZ 69 ft

SEOUL APP 123.8 363.8  
SEOUL TWR 126.2  
234.5 236.6

**SEOUL/Seoul(RKSM)**  
**HI-TACAN**  
**RWY 20**

Note : Approach and Circle to land under U.S. TERPS.



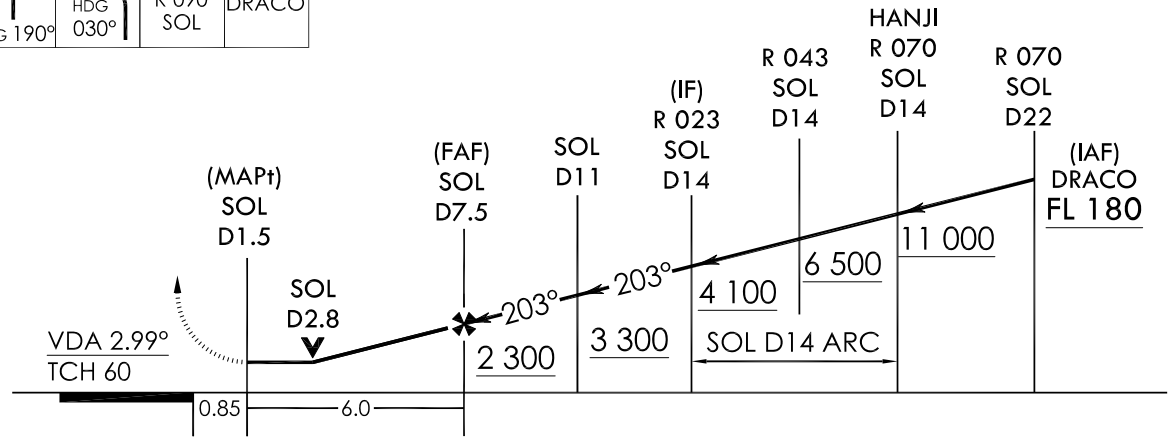
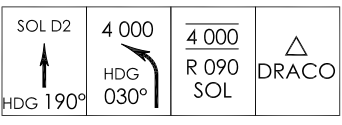
**NOT TO SCALE**

- NOTE**
1. Circling not authorized West of RWY 20-RWY 01/02.
  2. For inoperative ALSF-1, increase S-TAC RWY 20 CAT C, D, E visibility to 2 mile.
  3. Missed approach requires minimum climb of 390ft/NM to 3 000 ft.
  4. Avoid prohibited area (P518) 16 NM North of SOL.
  5. Avoid prohibited area (P73) 5.4 NM North West of SOL.
  6. 1 146 ft was not considered as final approach controlling OBST due to close to PFAF.

TRANSITION ALT 14 000  
TRANSITION LVL FL 140

Missed Approach Climb Rate table

KNOTS	60	120	180	240	300	TO
V/V(fpm)	390	770	1 150	1 530	1 910	3 000



CATEGORY	A	B	C	D	E
S-TAC RWY 20	N/A			820 - 1 3/4 751 (800 - 1 3/4)	
Circling	N/A		1 560 - 3 1 467(1 500-3)	2 260 - 3 2 167(2 200-3)	

**MISSED APPROACH**  
Climb HDG 190° to SOL 2DME and climbing left turn HDG 030° to cross R 090 SOL at 4 000 ft, then R 070 SOL to DRACO and hold, continue climb-in-holding to FL 180.

Change : Amended radial format.

**INTENTIONALLY**

**LEFT**

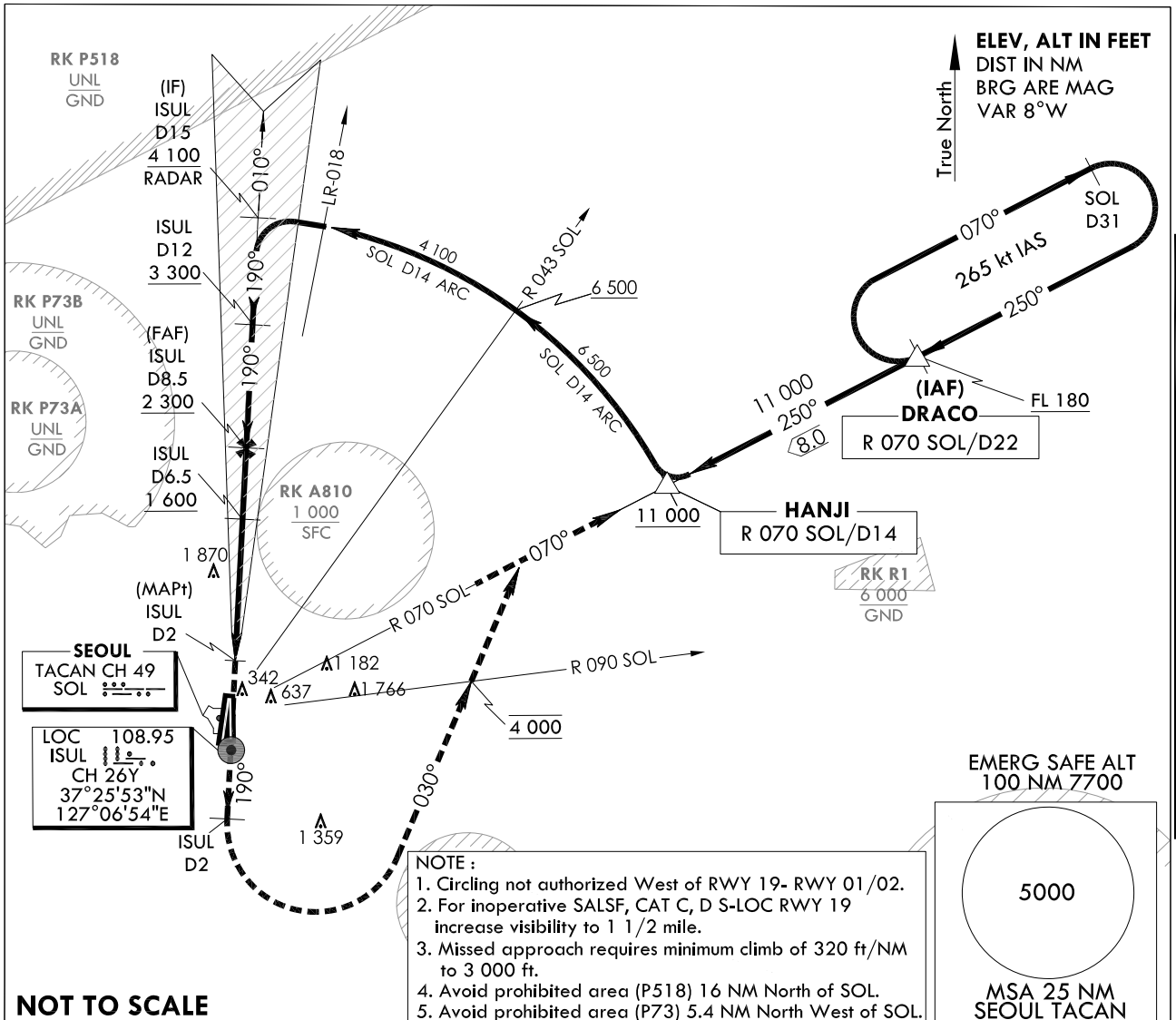
**BLANK**

**INSTRUMENT  
APPROACH  
CHART**

**AERODROME ELEV 93 ft**  
HEIGHTS RELATED TO  
THR RWY 19 - ELEV 68 ft

SEOUL APP 123.8 363.8  
SEOUL TWR 126.2  
234.5 236.6

**SEOUL/Seoul(RKSM)**  
**HI-LOC/DME**  
**RWY 19**

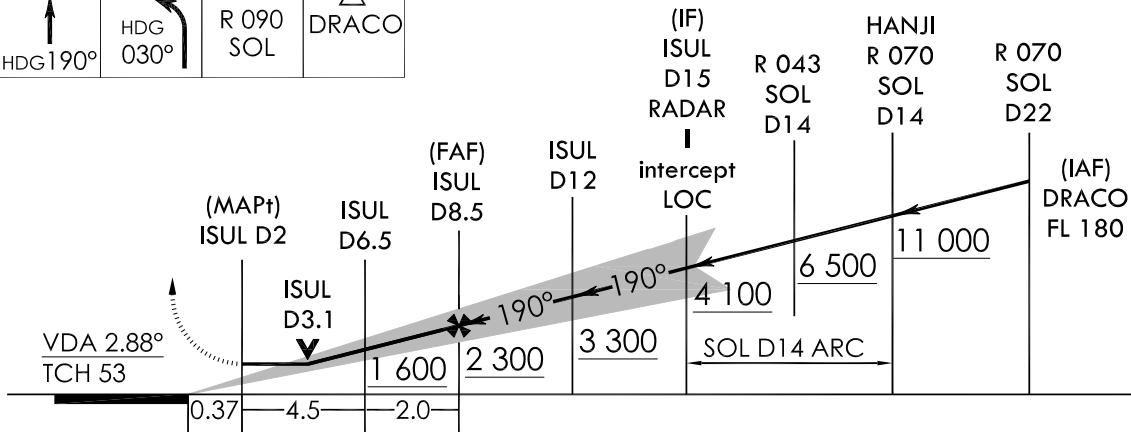
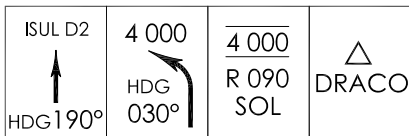


**NOT TO SCALE**

TRANSITION ALT 14 000  
TRANSITION LVL FL 140

Missed Approach Climb Rate table

KNOTS	60	120	180	240	300	TO
V/V(fpm)	320	640	960	1 280	1 590	3 000



CATEGORY	A	B	C	D	E
S-LOC RWY 19	N/A		600 - 1 1/4	528 (600 - 1 1/4)	
Circling	N/A		1 560 - 3 1 467(1 500-3)	2 260 - 3 2 167(2 200-3)	

**MISSED APPROACH**

Climb HDG 190° to ISUL 2 DME and climbing left turn HDG 030° to cross R 090 SOL TACAN at 4 000 ft, then R 070 SOL to DRACO and hold, continue climb-in-holding to FL 180.

Change : Amended coordinate and radial format.

**INTENTIONALLY**

**LEFT**

**BLANK**

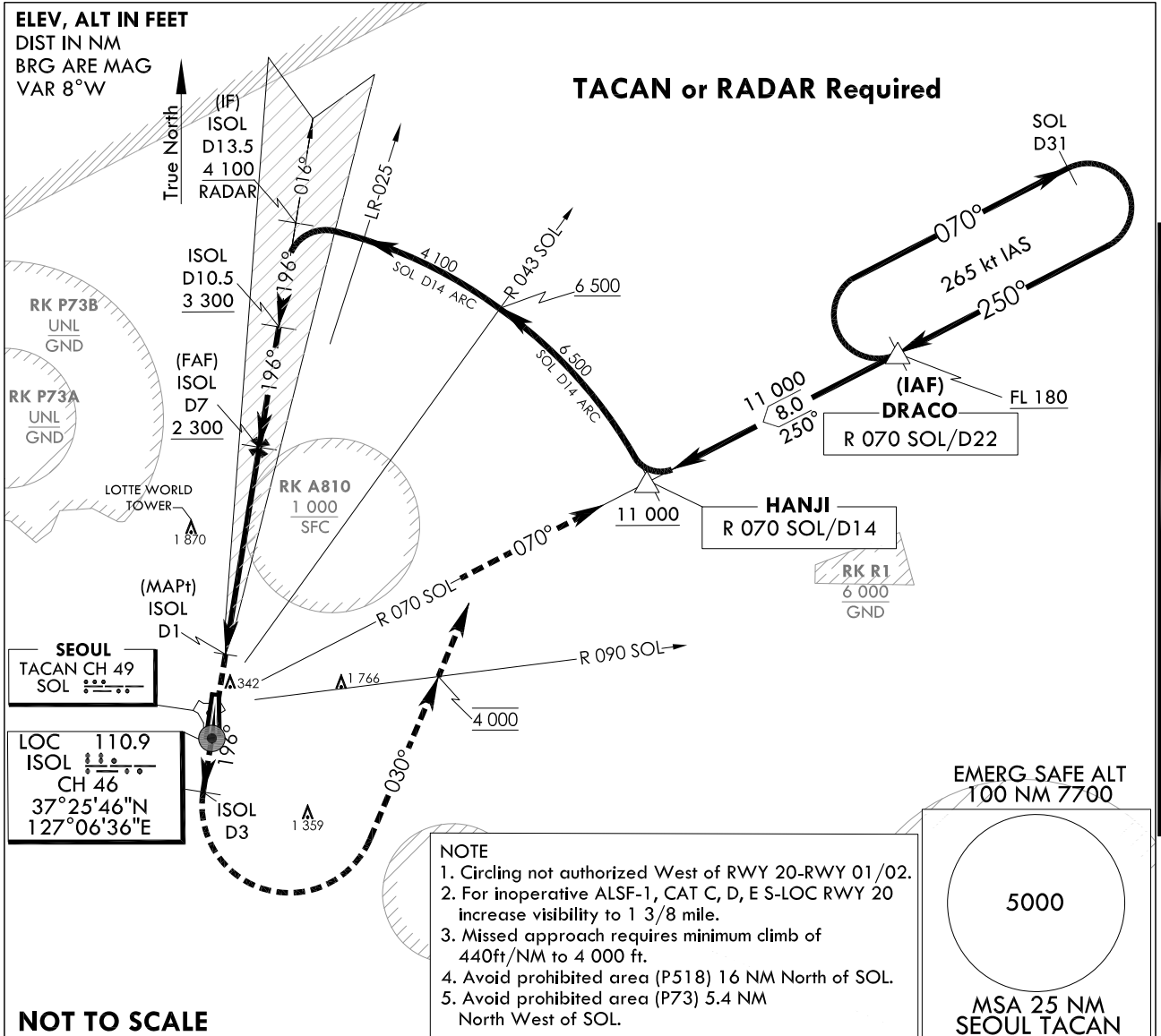
**INSTRUMENT  
APPROACH  
CHART**

**AERODROME ELEV 93 ft**  
HEIGHTS RELATED TO  
THR RWY 20 - ELEV 68 ft  
HIGHEST ELEV TDZ 69 ft

SEOUL APP 123.8 363.8  
SEOUL TWR 126.2  
234.5 236.6

**SEOUL/Seoul(RKSM)**  
**HI-LOC/DME**  
**RWY 20**

Note : Approach and Circle to land under U.S. TERPS.

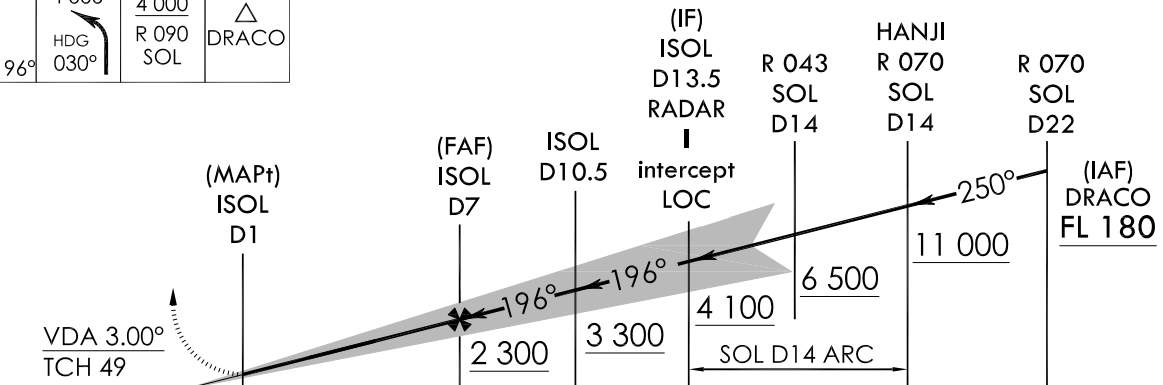
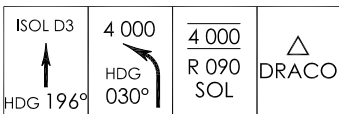


**NOT TO SCALE**

TRANSITION ALT 14 000  
TRANSITION LVL FL 140

Missed Approach Climb Rate table

KNOTS	60	120	180	240	300	TO
V/V(fpm)	440	880	1 320	1 760	2 200	4 000



NOTE : VGSI and LOC decent angle not coincident : (VGSI Angle 3.00° / TCH 61).

CATEGORY	A	B	C	D	E
S-LOC RWY 20	N/A			520/45 451 (500 - 7/8)	
Circling	N/A		1 560 - 3 1 467(1 500-3)	2 260 - 3 2 167(2 200-3)	

**MISSED APPROACH**

Climb HDG 196° to ISOL 3DME and climbing left turn HDG 030° to cross R 090 SOL at 4 000 ft, then R 070 SOL to DRACO and hold, continue climb-in-holding to FL 180.

Change : Amended coordinate and radial format.

**INTENTIONALLY**

**LEFT**

**BLANK**



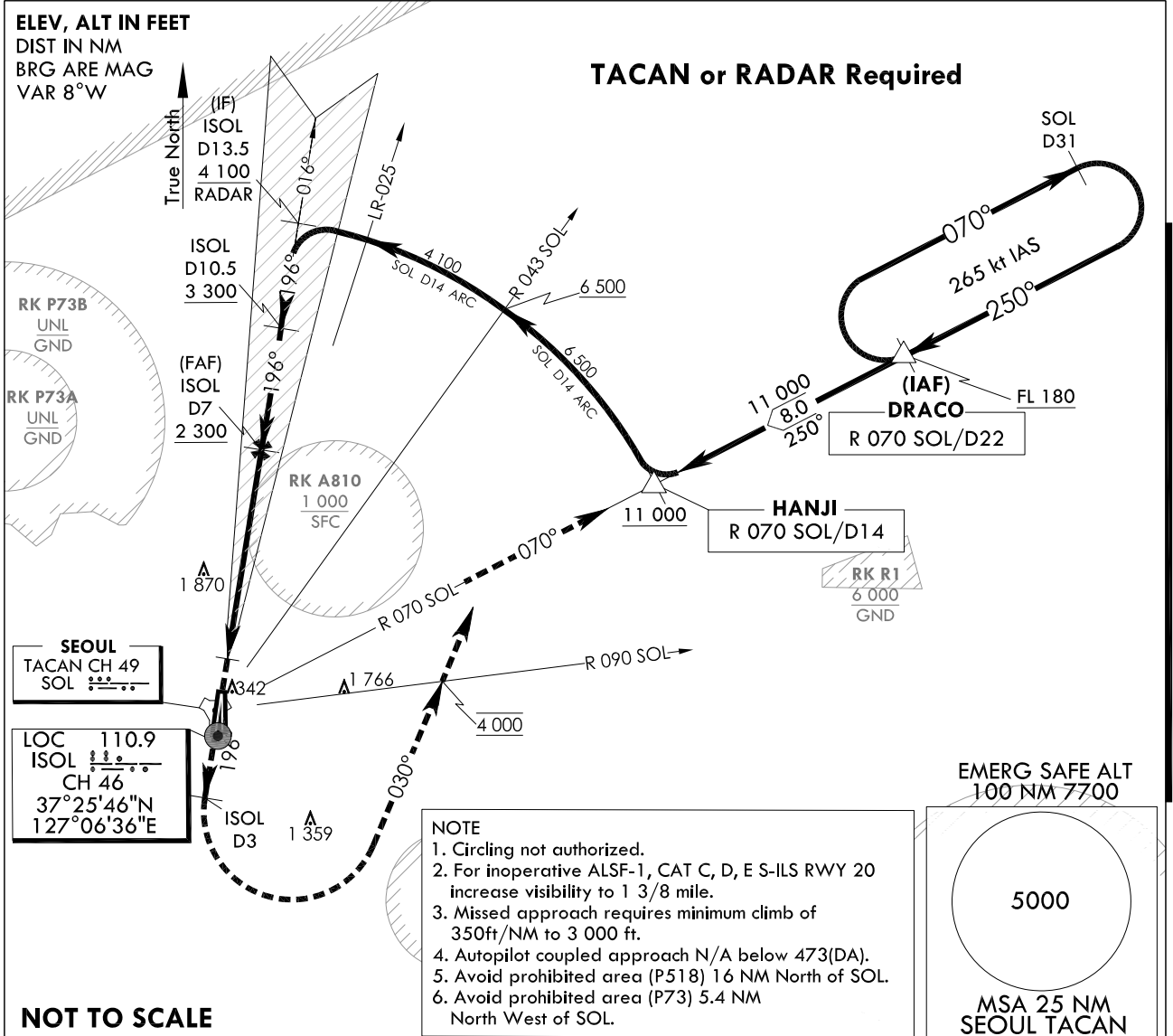
**INSTRUMENT  
APPROACH  
CHART**

**AERODROME ELEV 93 ft**  
HEIGHTS RELATED TO  
THR RWY 20 - ELEV 68 ft  
HIGHEST ELEV TDZ 69 ft

SEOUL APP 123.8 363.8  
SEOUL TWR 126.2  
234.5 236.6

**SEOUL/Seoul(RKSM)**  
**HI-ILS**  
**RWY 20**

Note : Approach and Circle to land under U.S. TERPS.

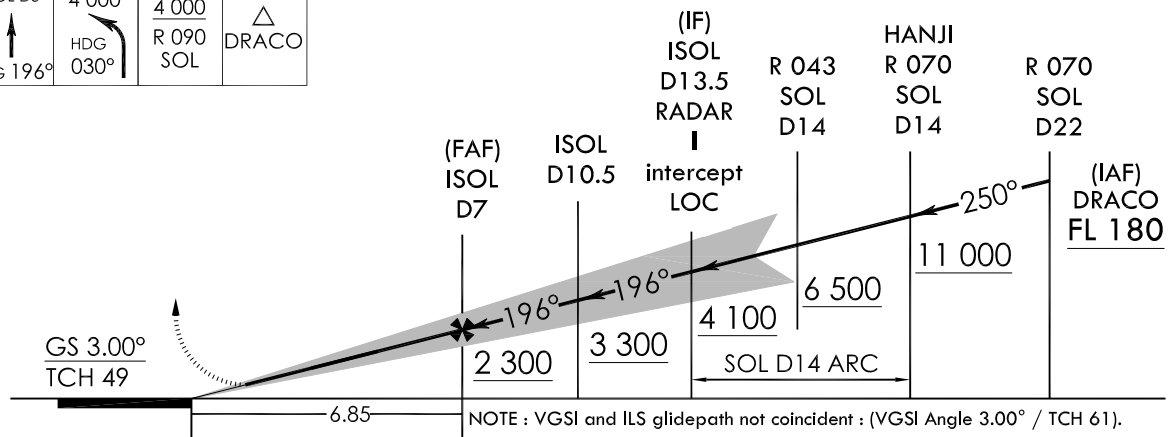
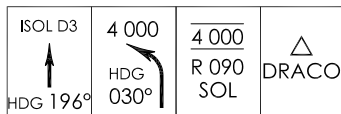


**NOT TO SCALE**

TRANSITION ALT 14 000  
TRANSITION LVL FL 140

Missed Approach Climb Rate table

KNOTS	60	120	180	240	300	TO
V/V(fpm)	350	700	1 050	1 400	1 750	3 000



**MISSED APPROACH**

Climb HDG 196° to ISOL 3DME and climbing left turn HDG 030° to cross R 090 SOL at 4 000 ft, then R 070 SOL to DRACO and hold, continue climb-in-holding to FL 180.

CATEGORY	A	B	C	D	E
S-ILS RWY 20	N/A			473/45 404 (400 - 7/8)	

Change : Amended coordinate and radial format.

**INTENTIONALLY**

**LEFT**

**BLANK**